



1 Divide the Bays Precinct into eight distinct but linked Destinations

- A** Bays Waterfront Promenade
- B** White Bay Power Station
- C** Bays Market District
- D** Wentworth Park
- E** Rozelle Bay and Bays Waterways
- F** Rozelle Rail Yards
- G** Glebe Island
- H** White Bay

3 Recover and repurpose the White Bay Power Station

6 Work towards repurposing the Glebe Island Bridge

2 Introduce the Bays Waterfront Promenade

5 Include Wentworth Park in the Program Area

7 Introduce water quality initiatives in the Bays Waterways

4 Create the Bays Market District incorporating a rejuvenated Sydney Fish Market

BAYS' PRECINCT



'BAYS' PRECINCT



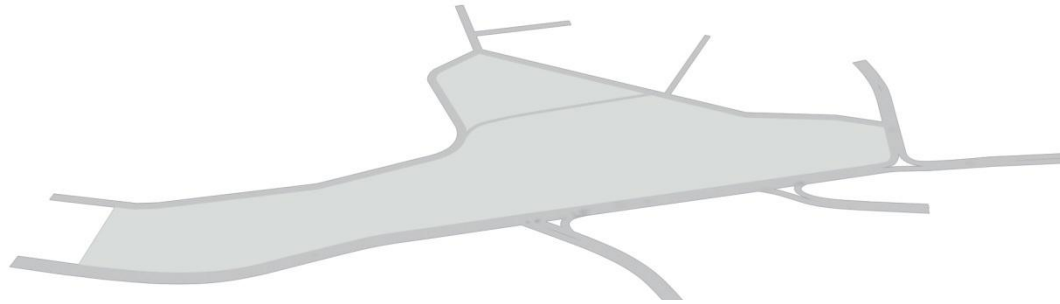
'BAYS' PRECINCT



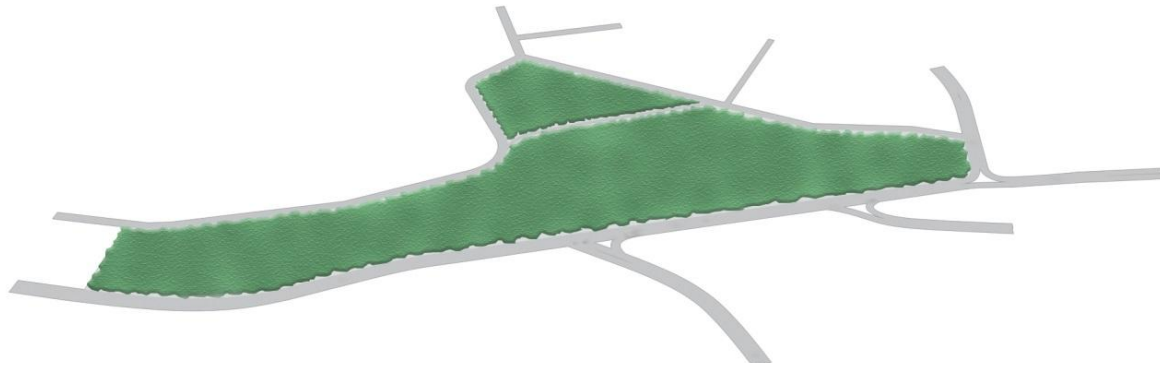
'WHITE BAY POWERSTATION (ARTIST: JANE BENNETT)



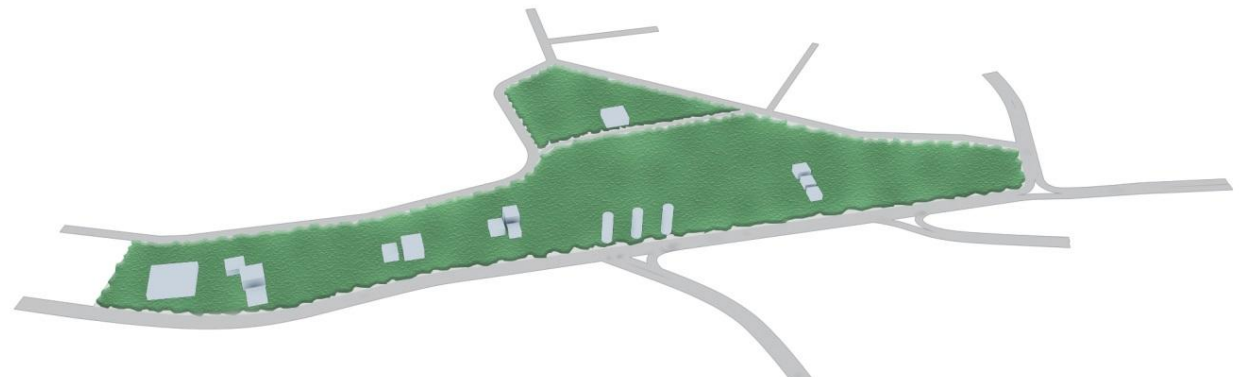
'WHITE BAY POWERSTATION (ARTIST: JANE BENNETT)



GROUND PLANE



CANOPY



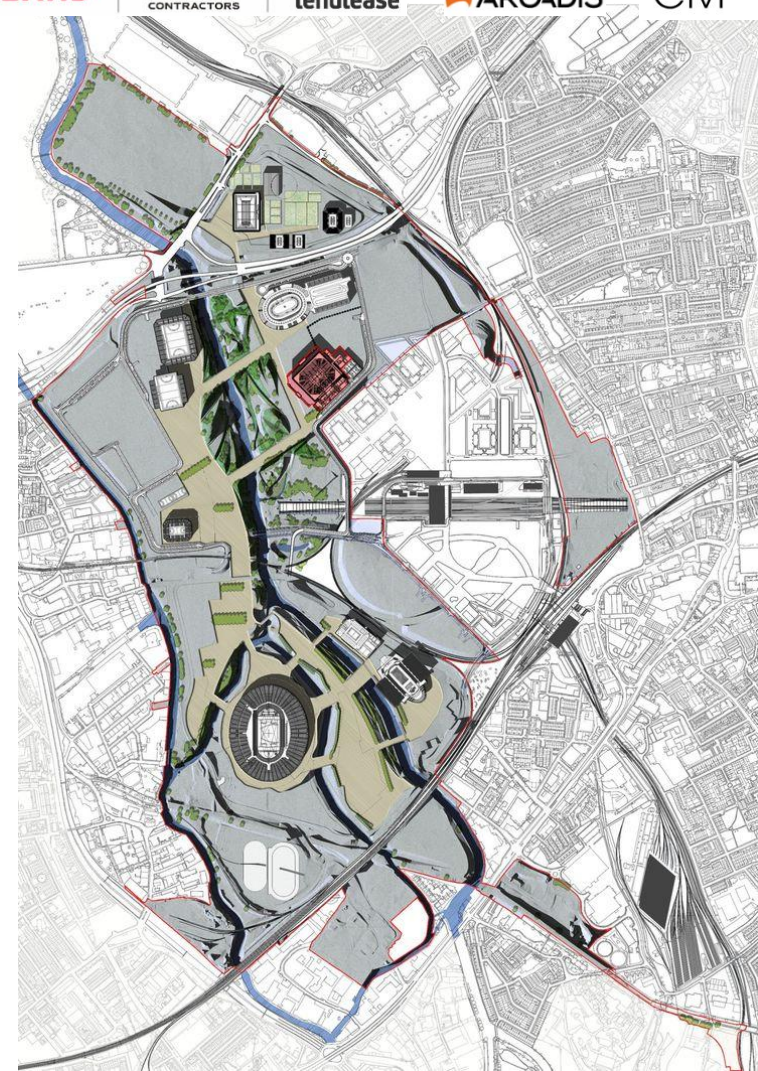
STRUCTURES

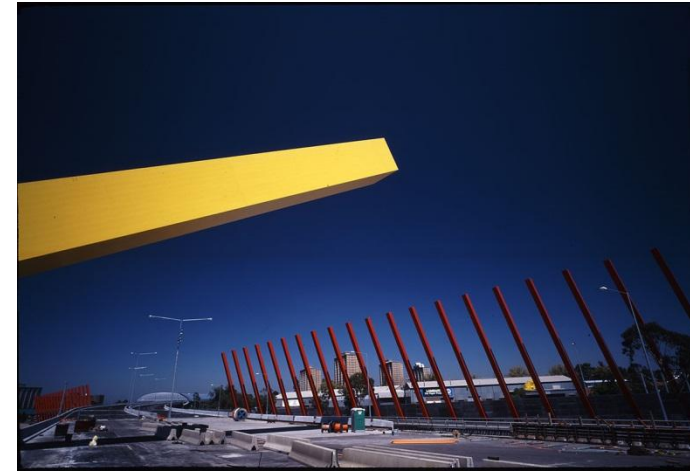


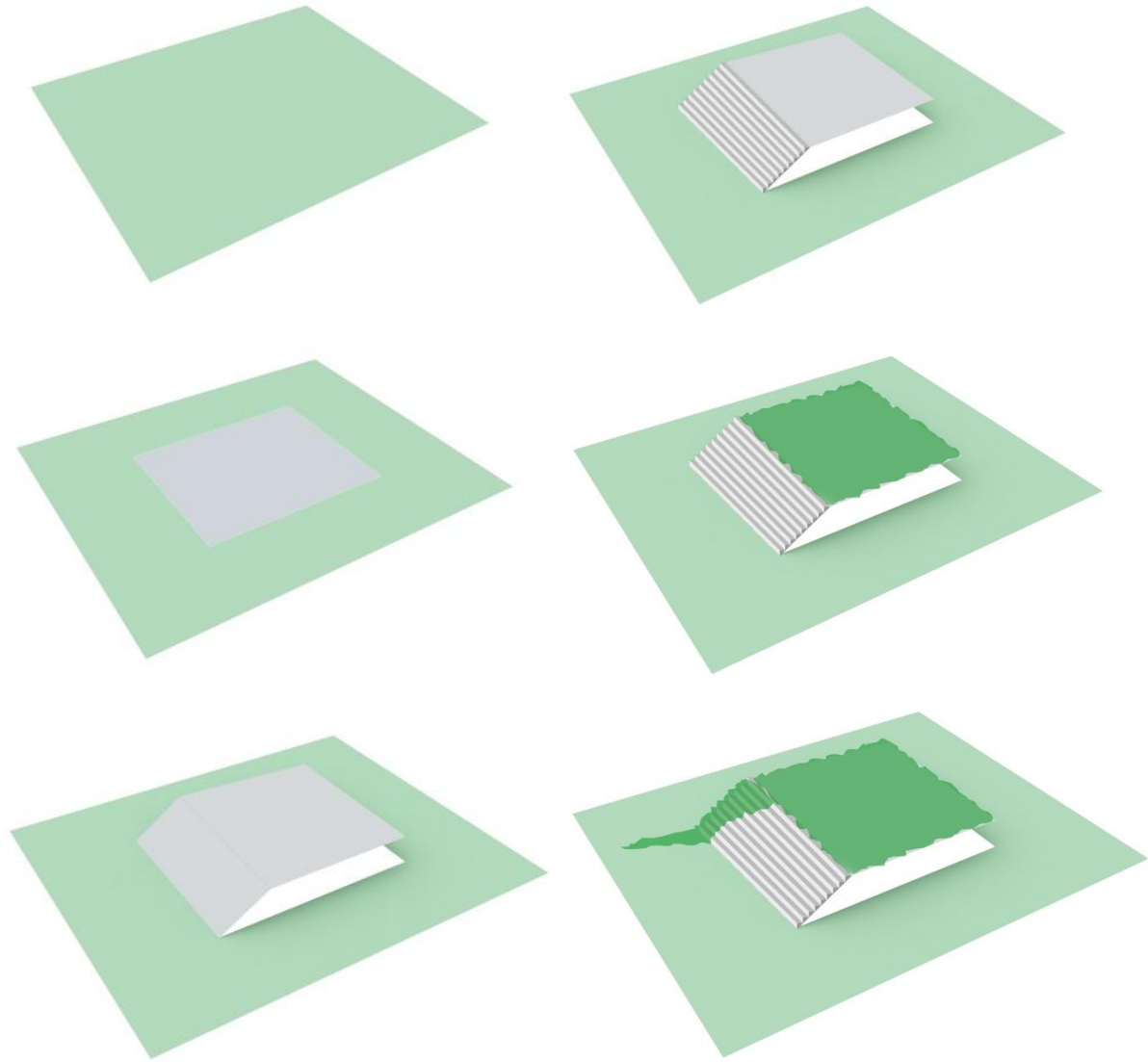
ACTIVE



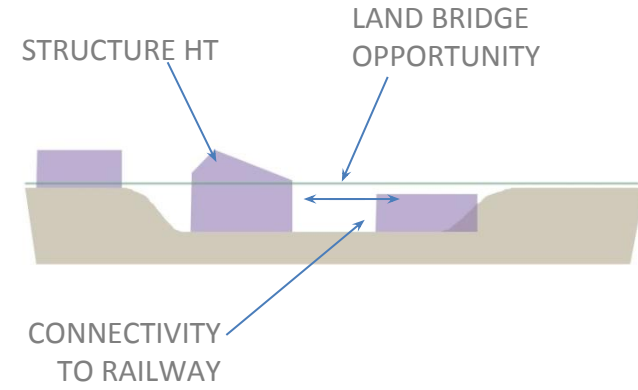
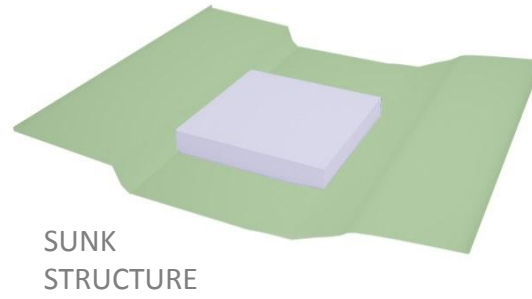
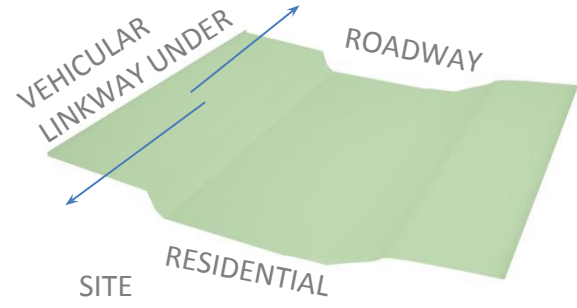
PASSIVE



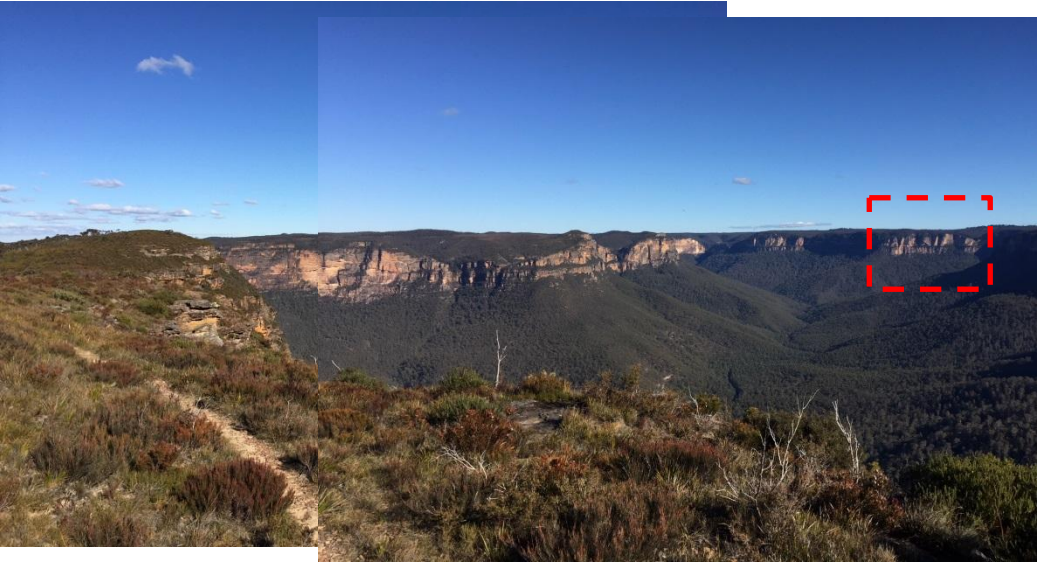


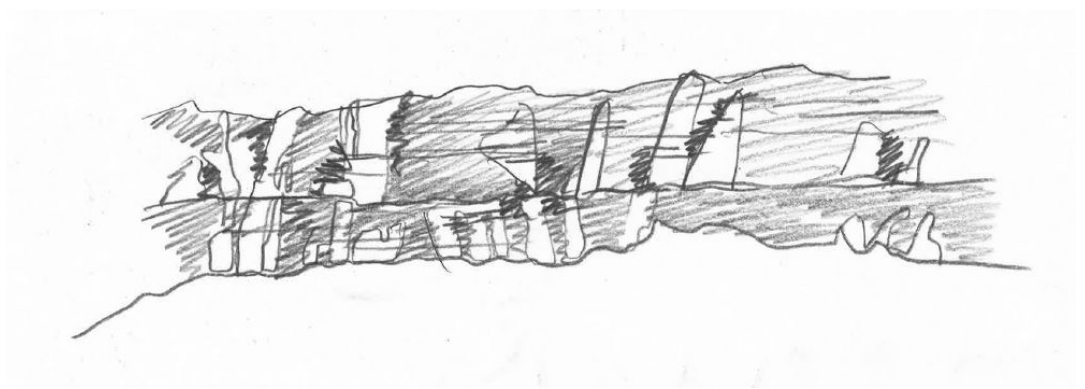
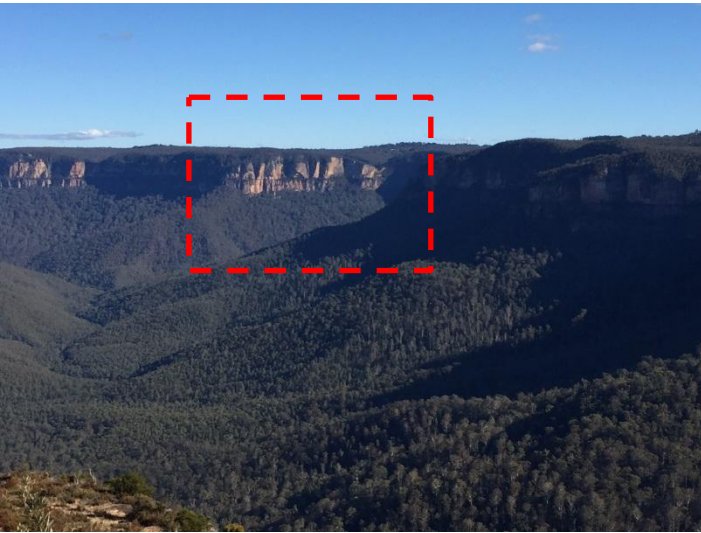


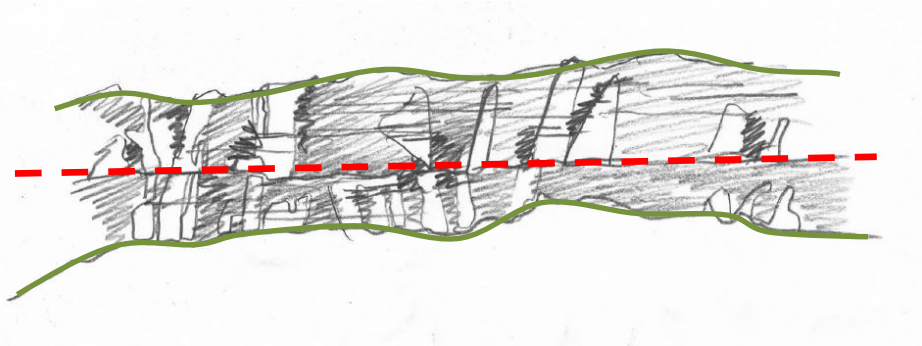








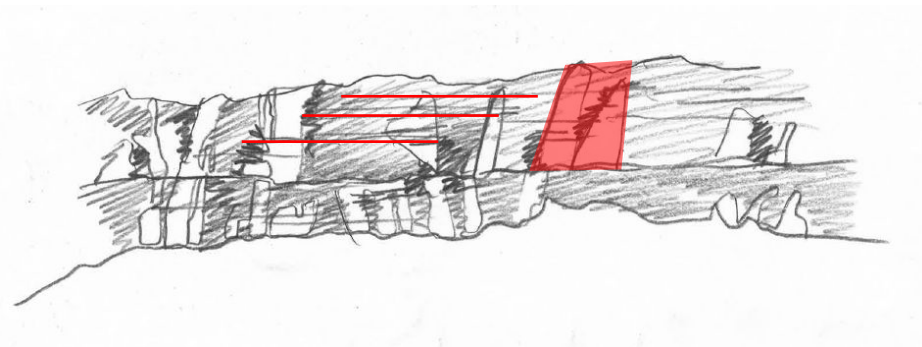




Alternating Height Ridge; Green Edge

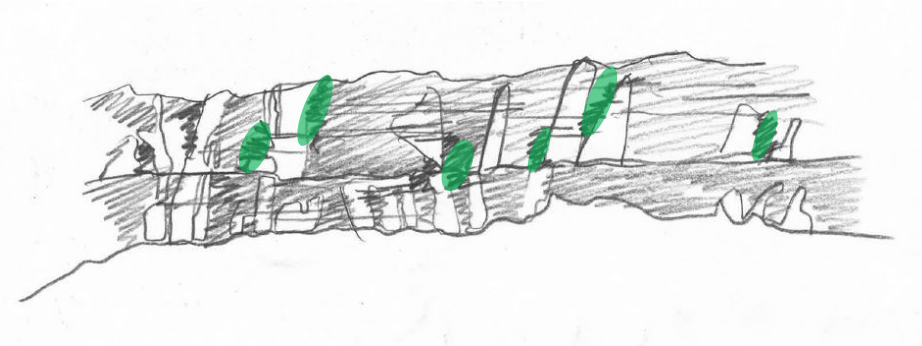
Trabeation

Alternating Height Base; Green Edge



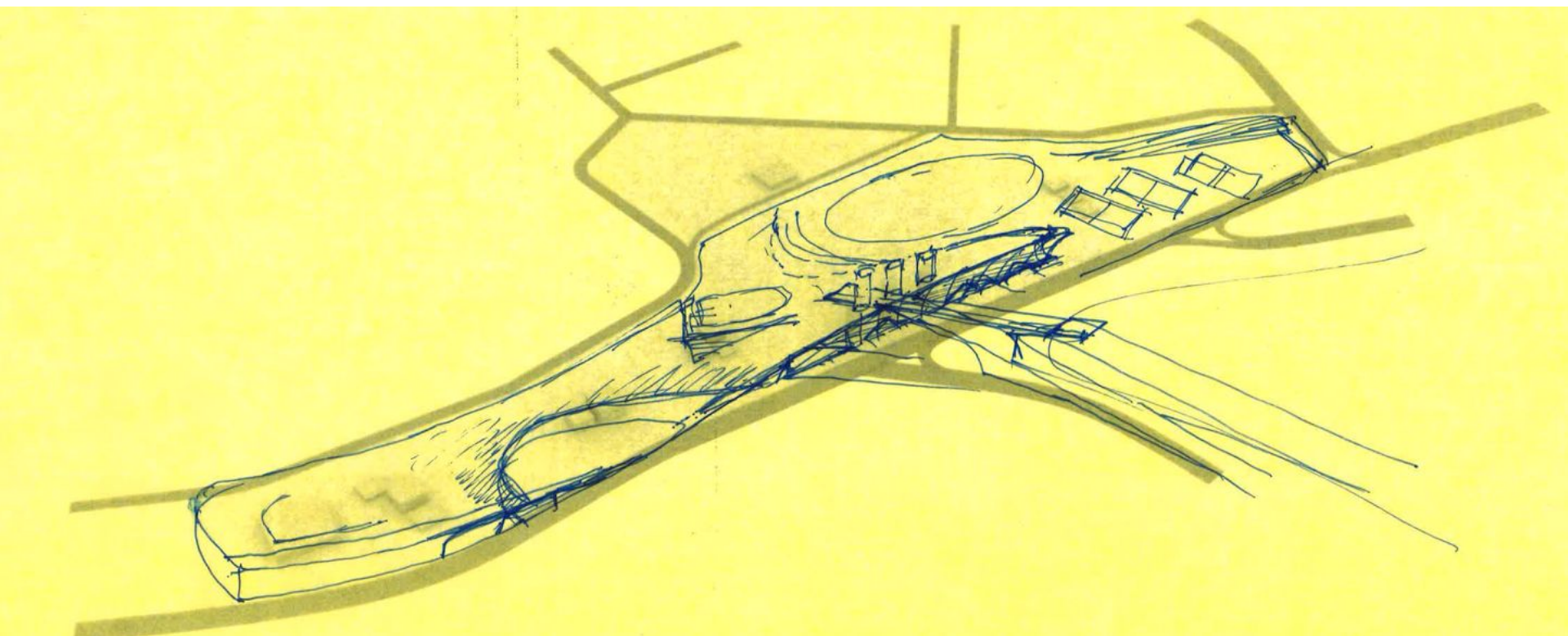
Shifting Planes, Positive / Negative

Horizontal 'Strikes'

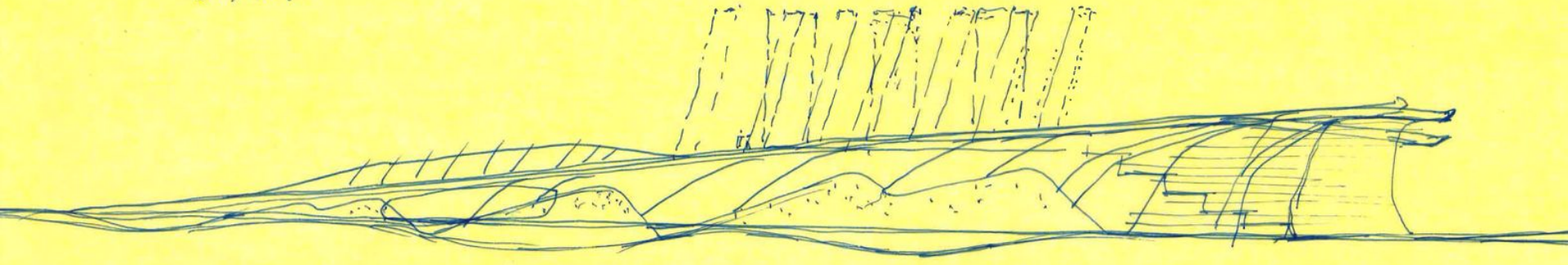


Pocketed Vegetation

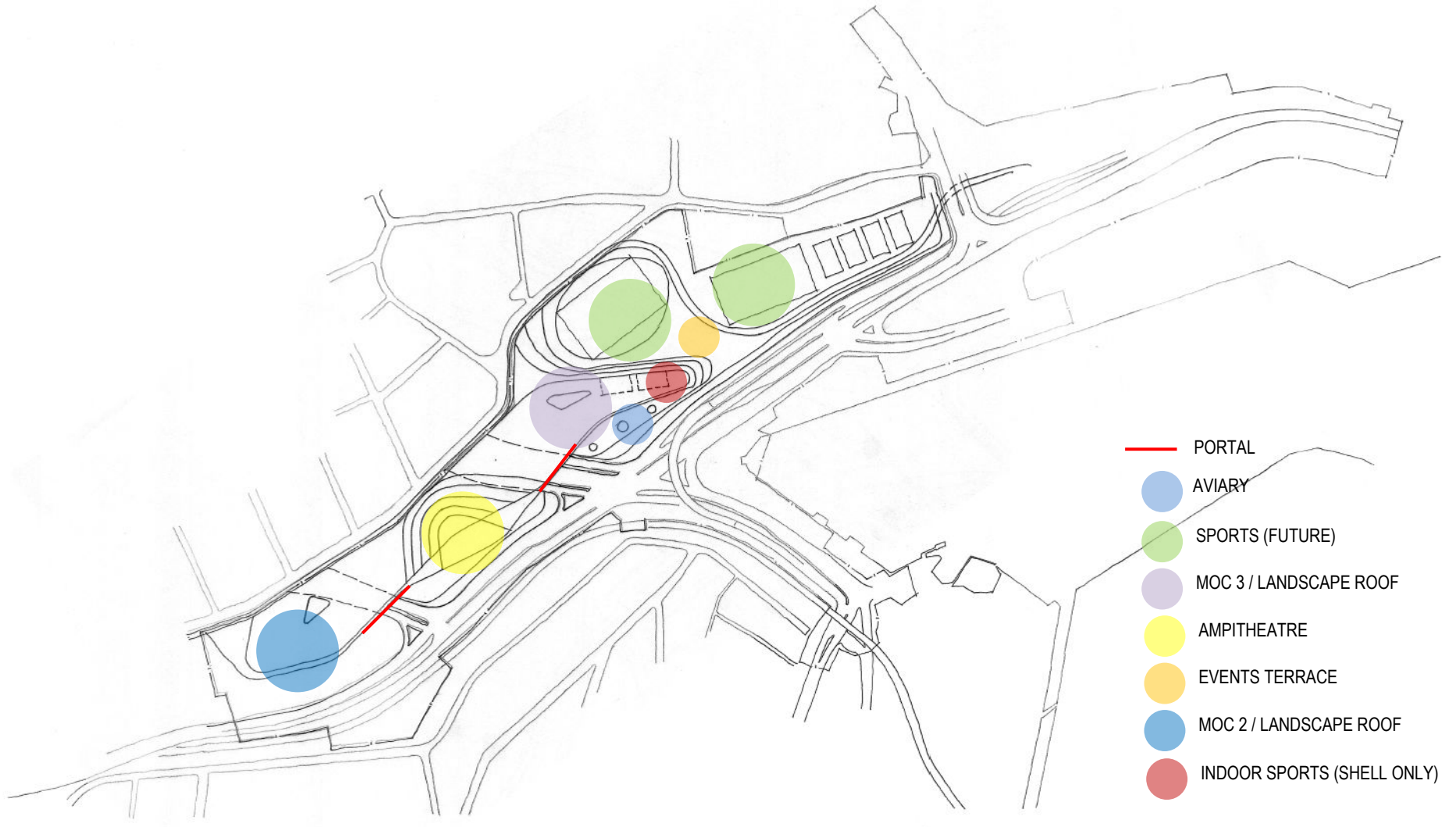




brudfield
parliament house new screen.
restrictors bay portal.
rail to base

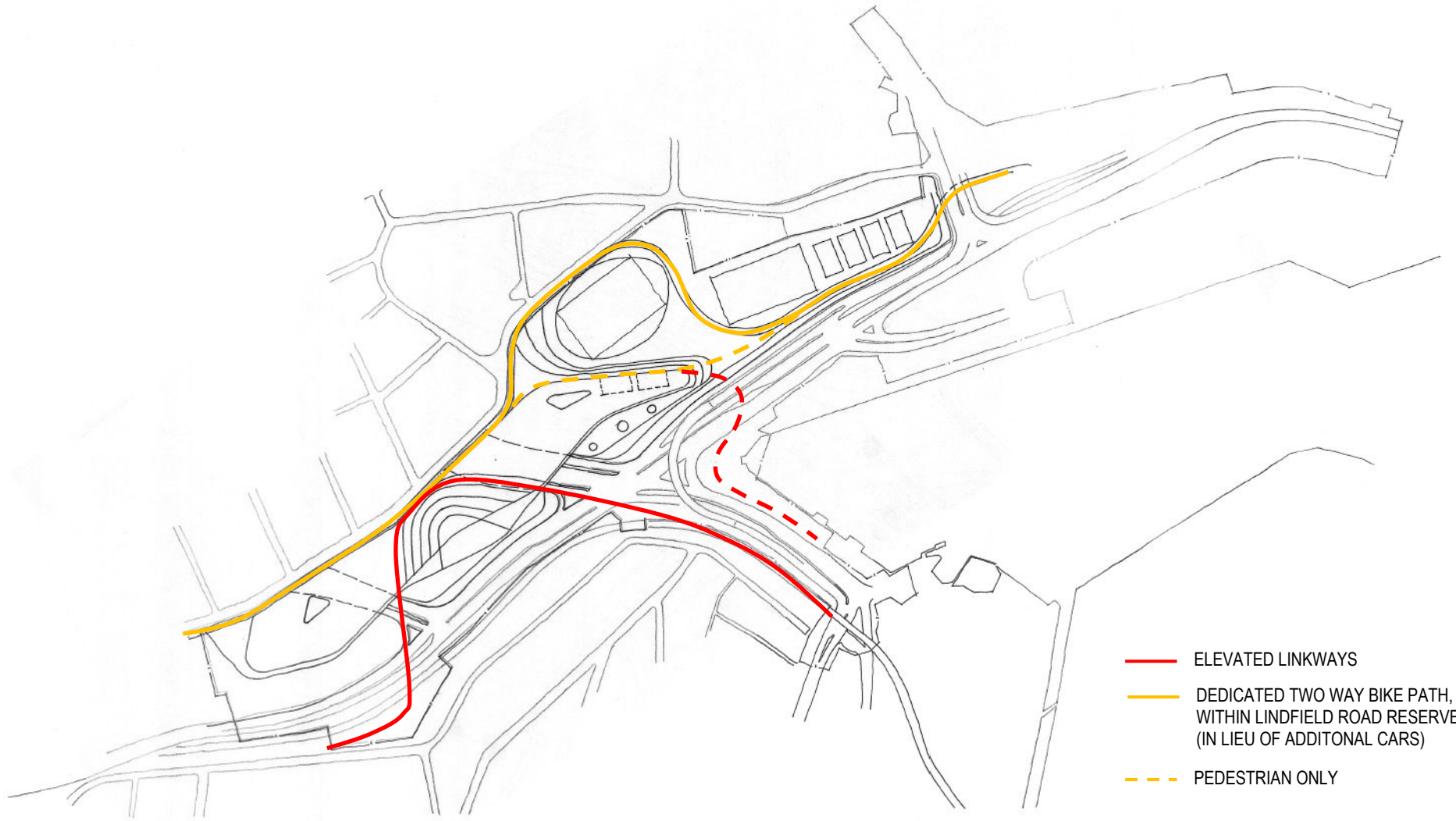






- PORTAL
- AVIARY
- SPORTS (FUTURE)
- MOC 3 / LANDSCAPE ROOF
- AMPITHEATRE
- EVENTS TERRACE
- MOC 2 / LANDSCAPE ROOF
- INDOOR SPORTS (SHELL ONLY)



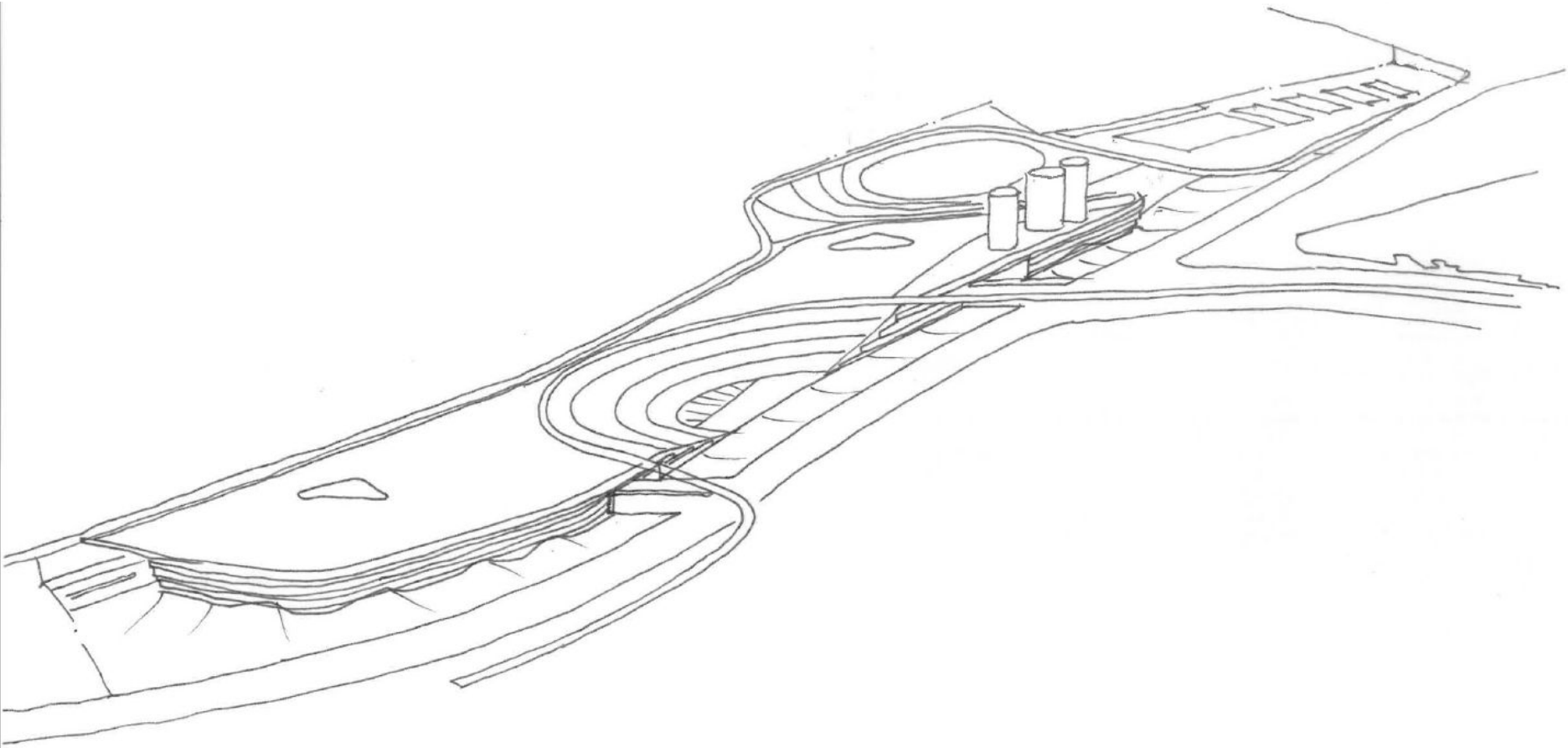


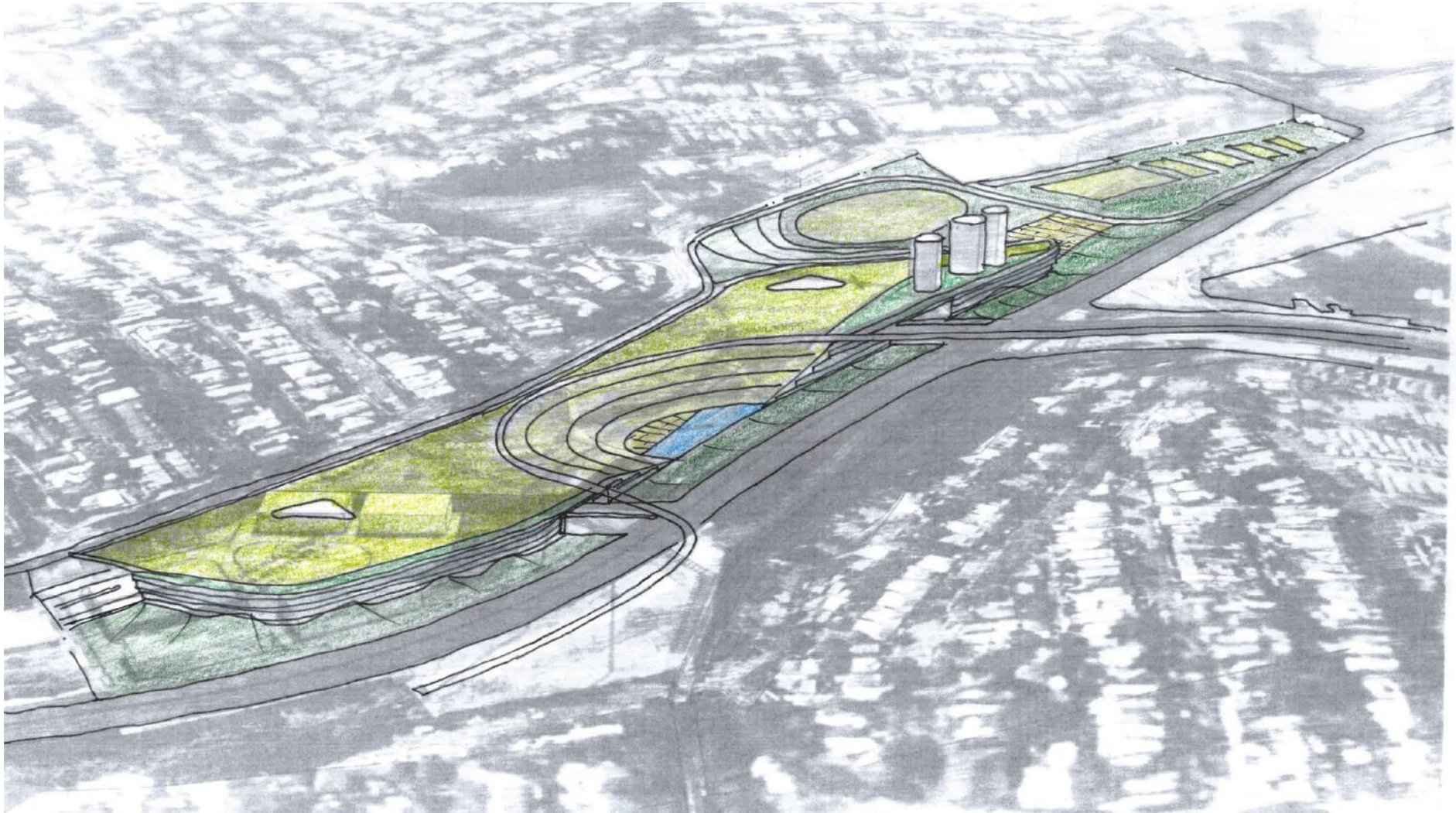
- ELEVATED LINKWAYS
- DEDICATED TWO WAY BIKE PATH, WITHIN LINDFIELD ROAD RESERVE (IN LIEU OF ADDITIONAL CARS)
- - - PEDESTRIAN ONLY

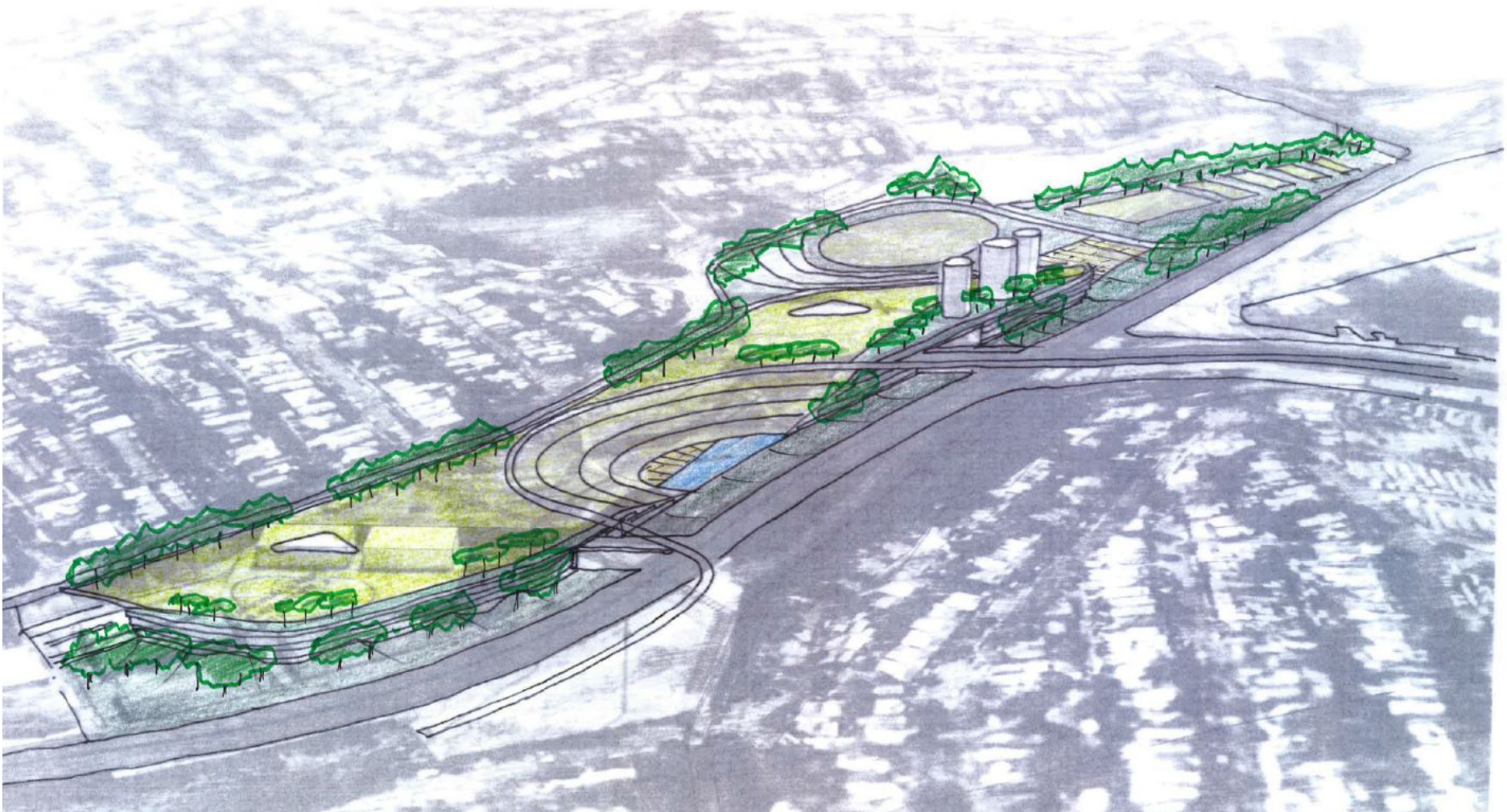


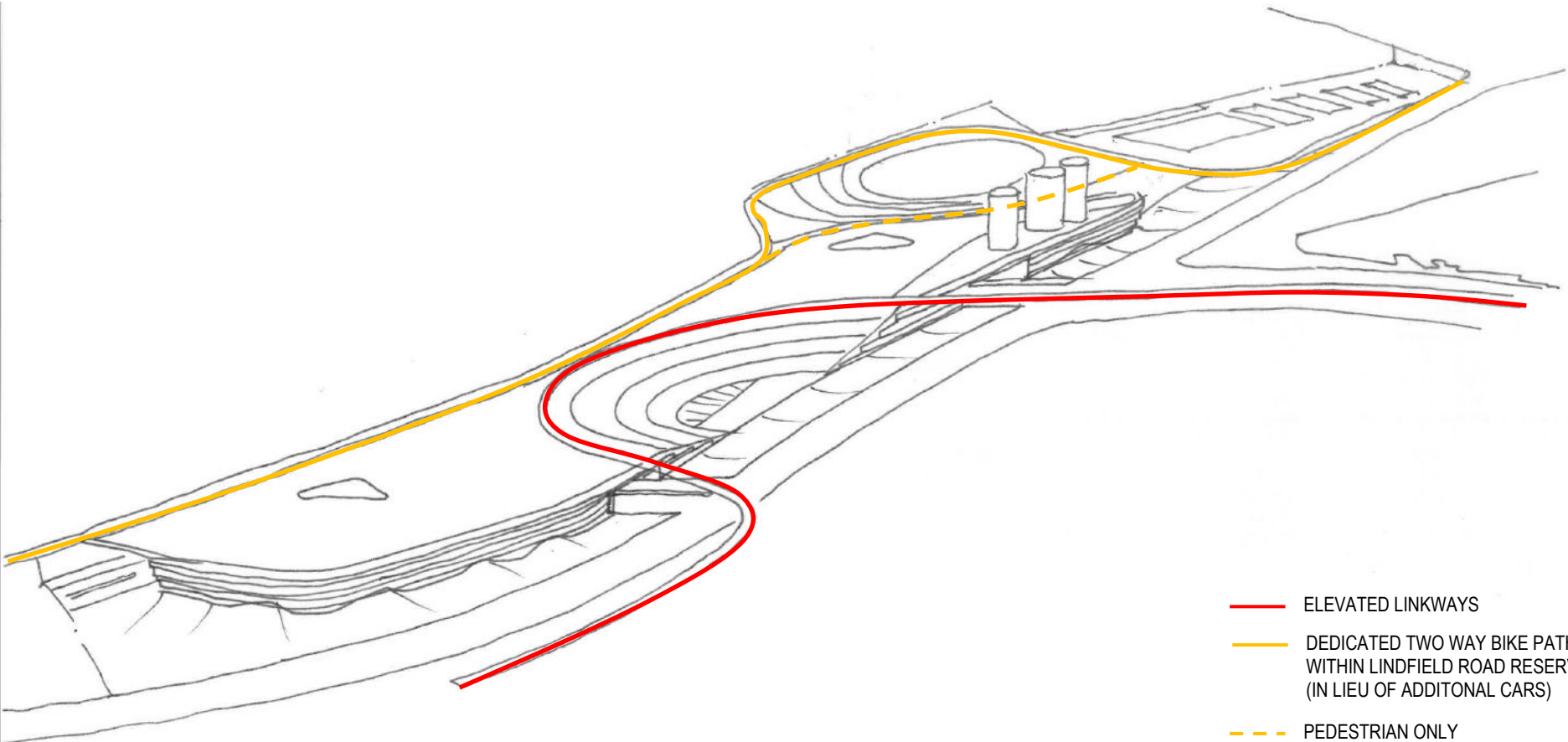
- CASCADING TERRACES FORMING VIEWING TERRACES TO SPORTS FIELDS
- - - LINE OF 'ESCARPMENT'
- AT GRADE CONNECTION LINDFIELD ROAD TO PARK & MOC 2 & 3 LANDSCAPE ROOFS
- VOID TO MOC 2 & 3 BELOW FOR DAYLIGHT PENETRATION TO LEVELS BELOW PARK






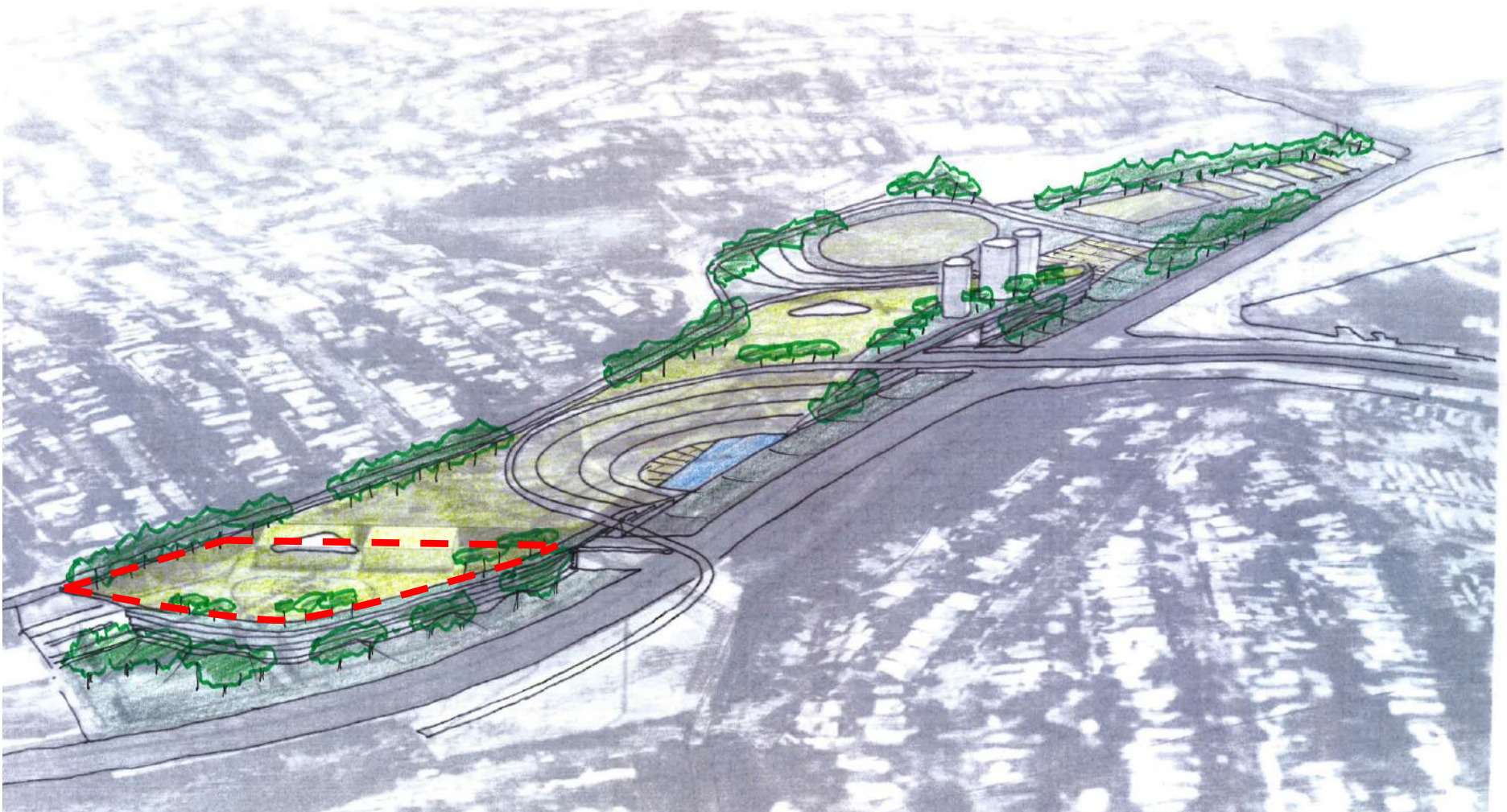


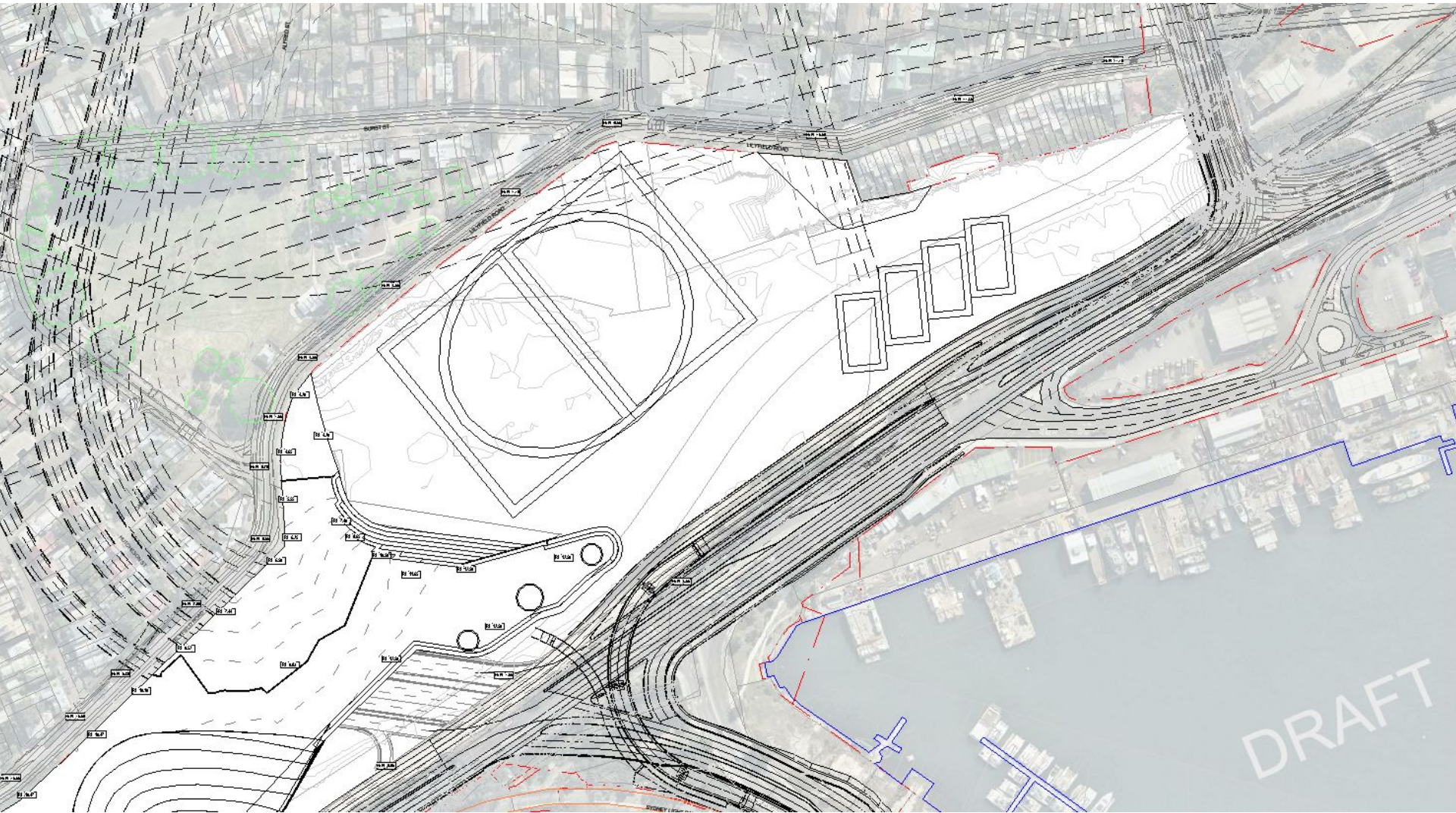


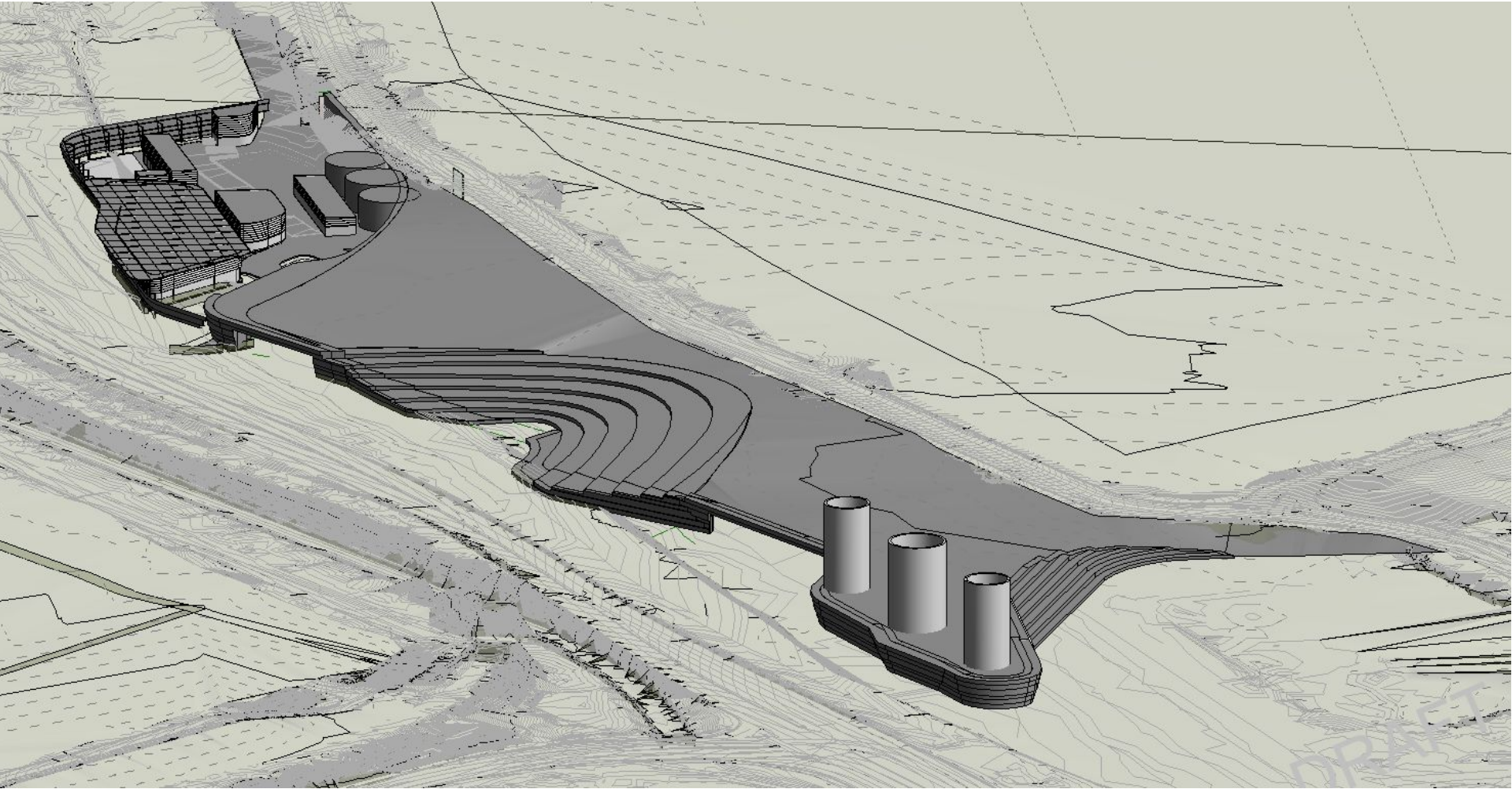


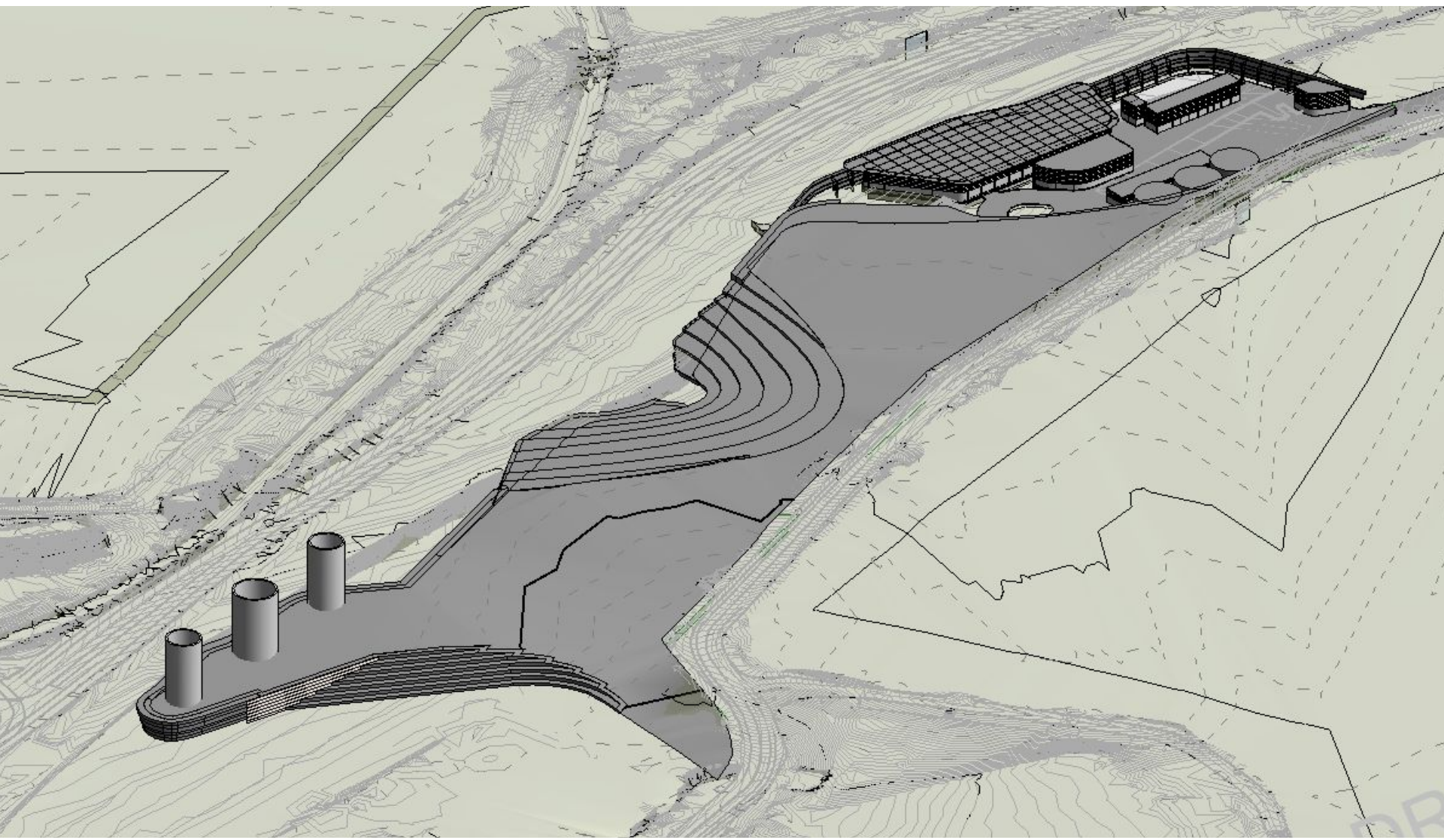


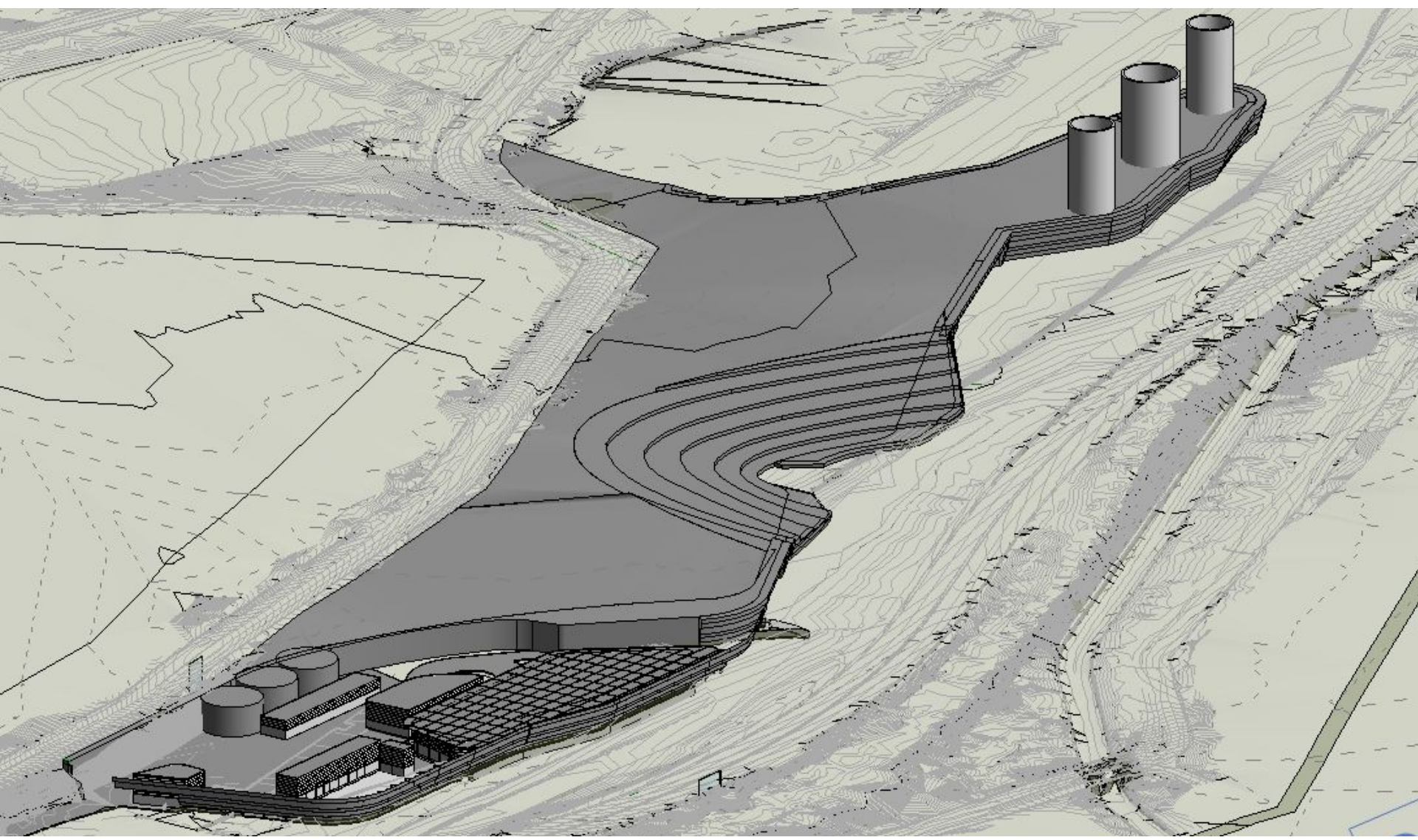
-  ELEVATED LINKWAYS
-  DEDICATED TWO WAY BIKE PATH, WITHIN LINDFIELD ROAD RESERVE (IN LIEU OF ADDITIONAL CARS)
-  PEDESTRIAN ONLY

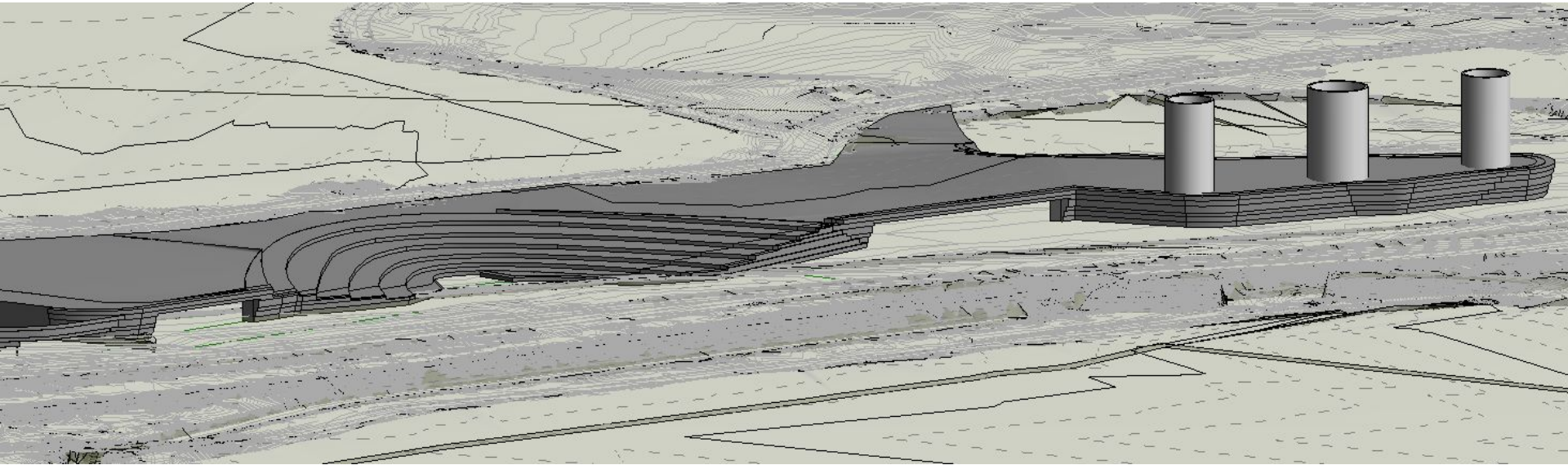


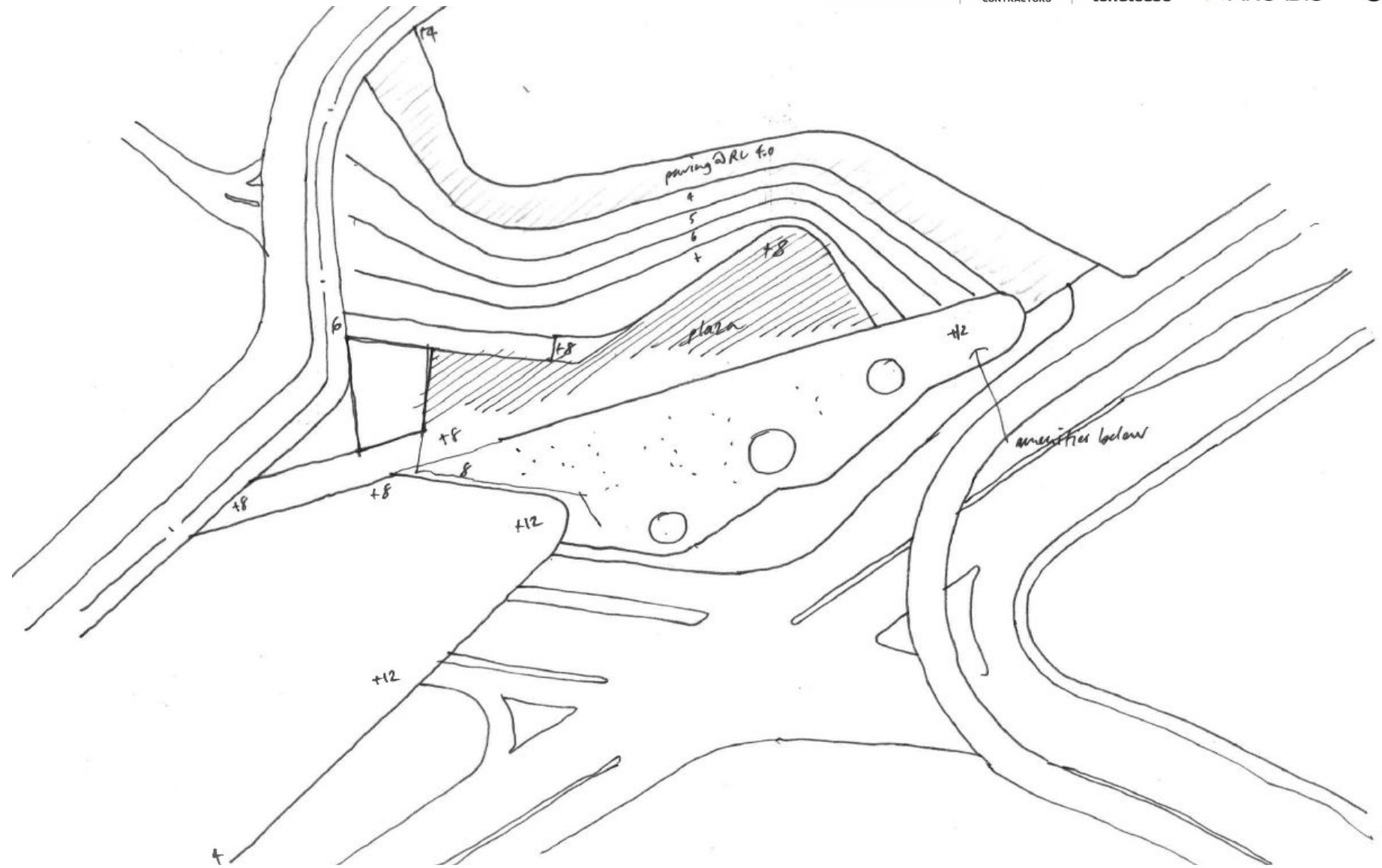


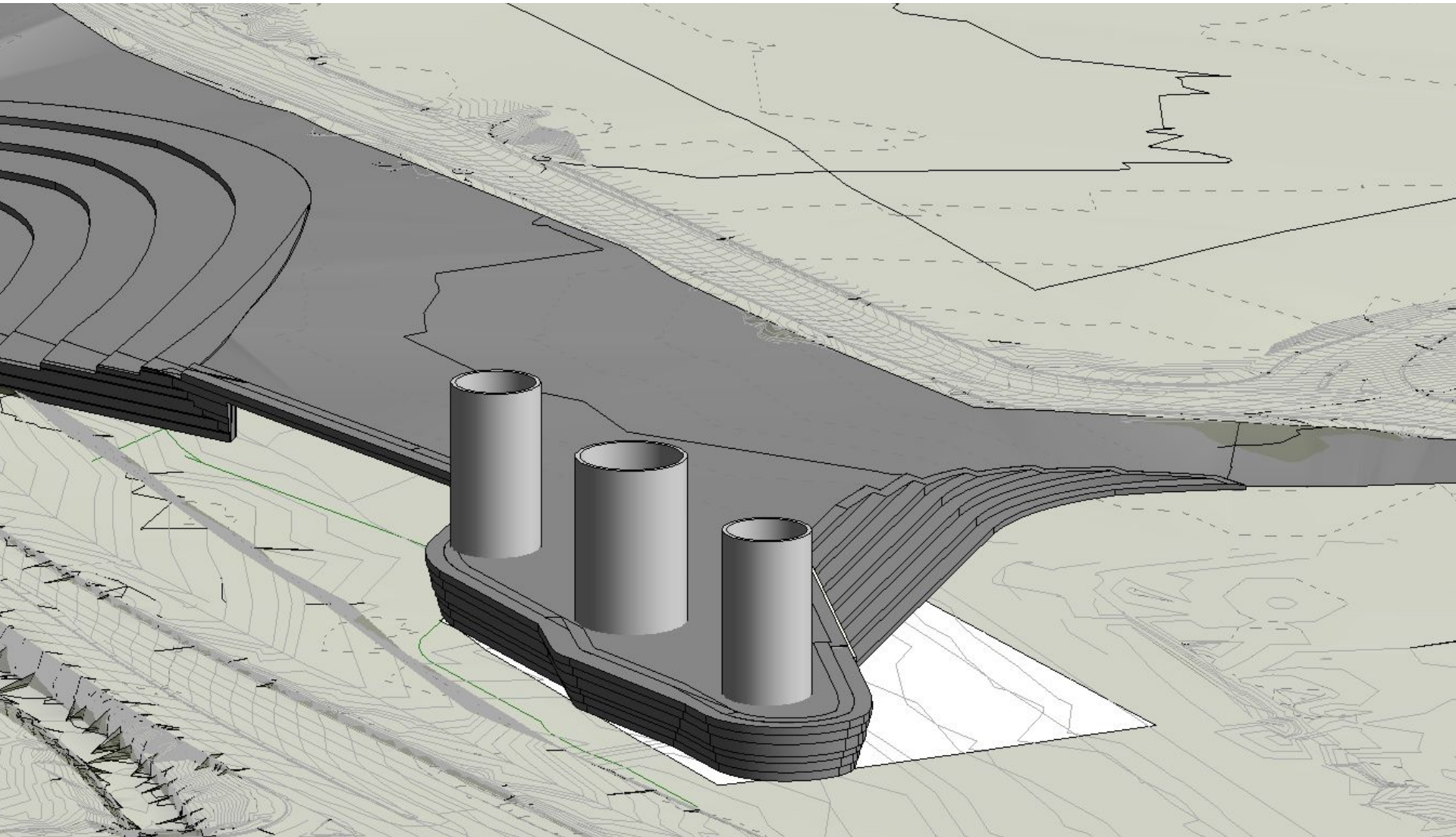


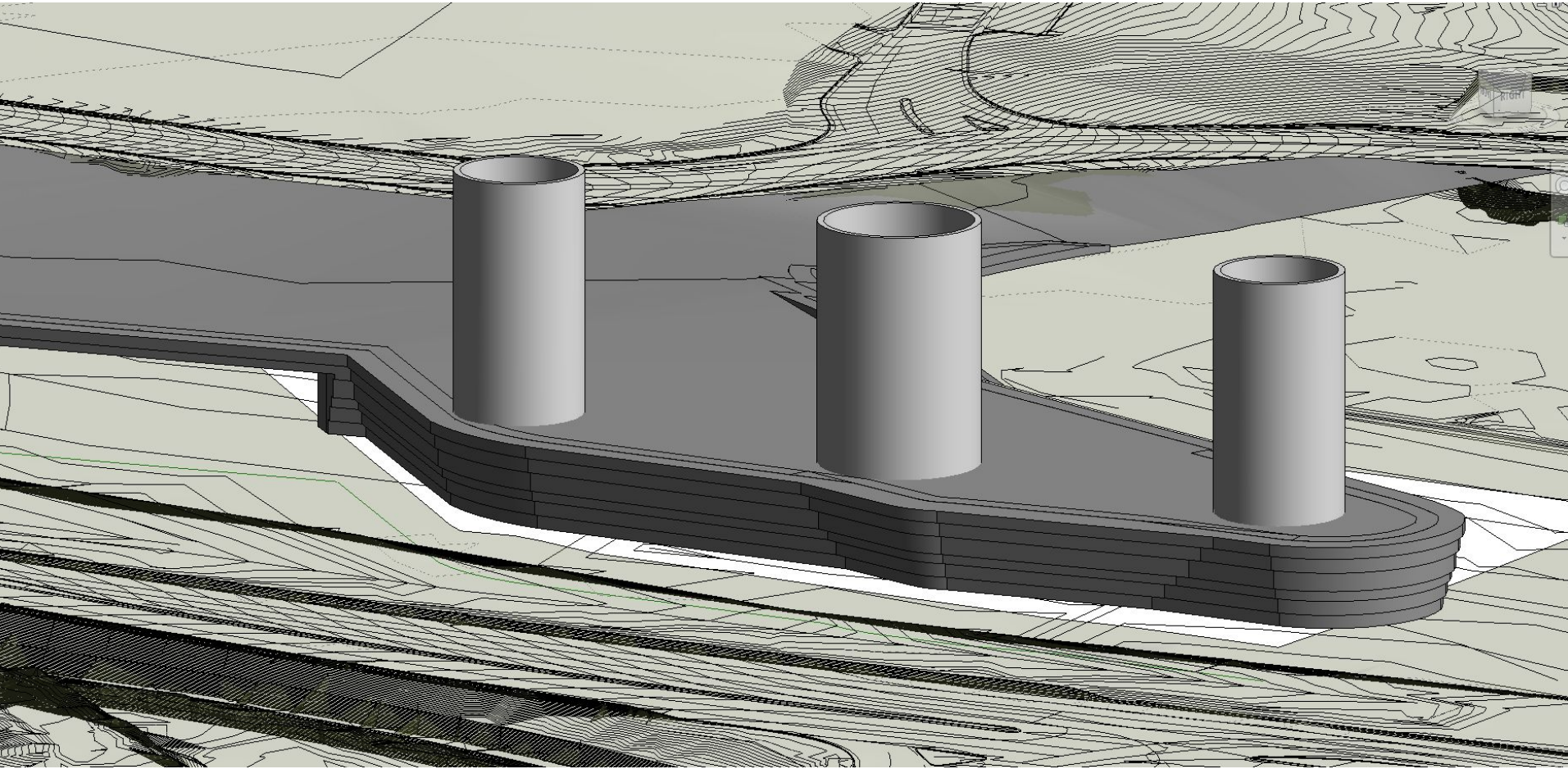


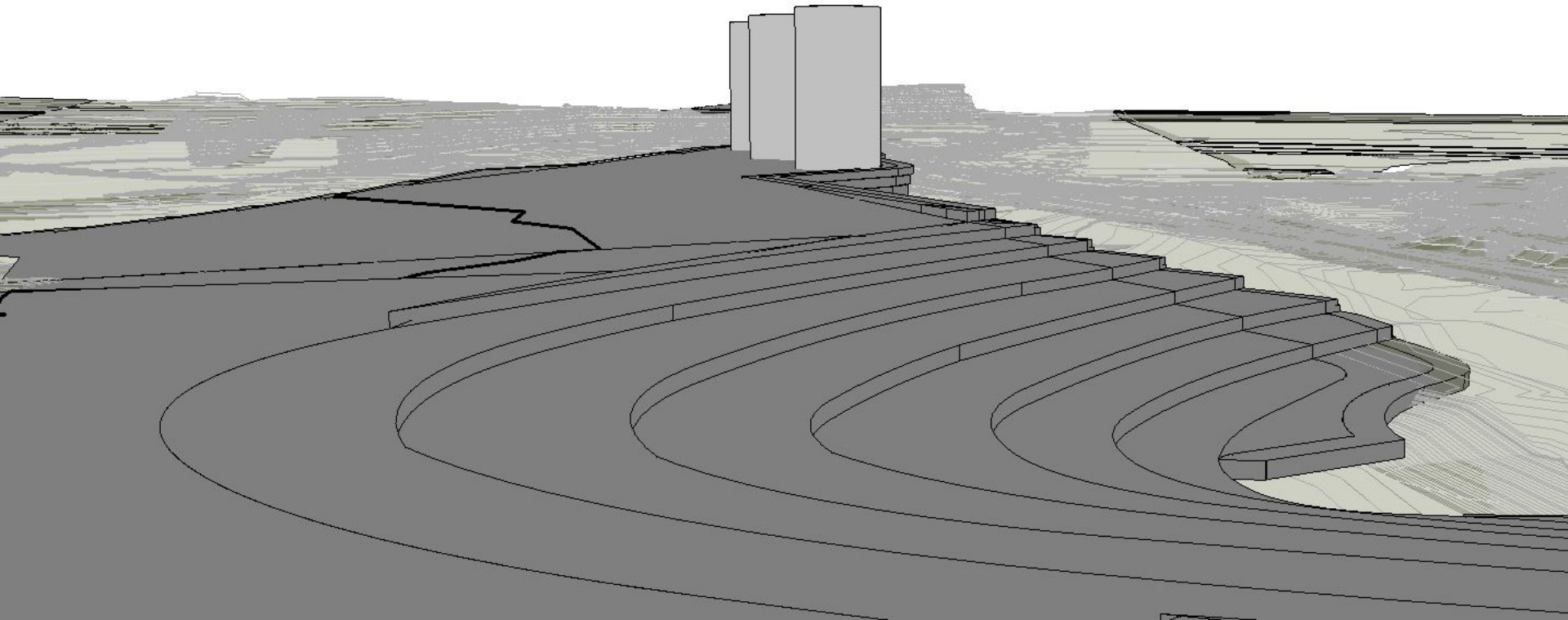


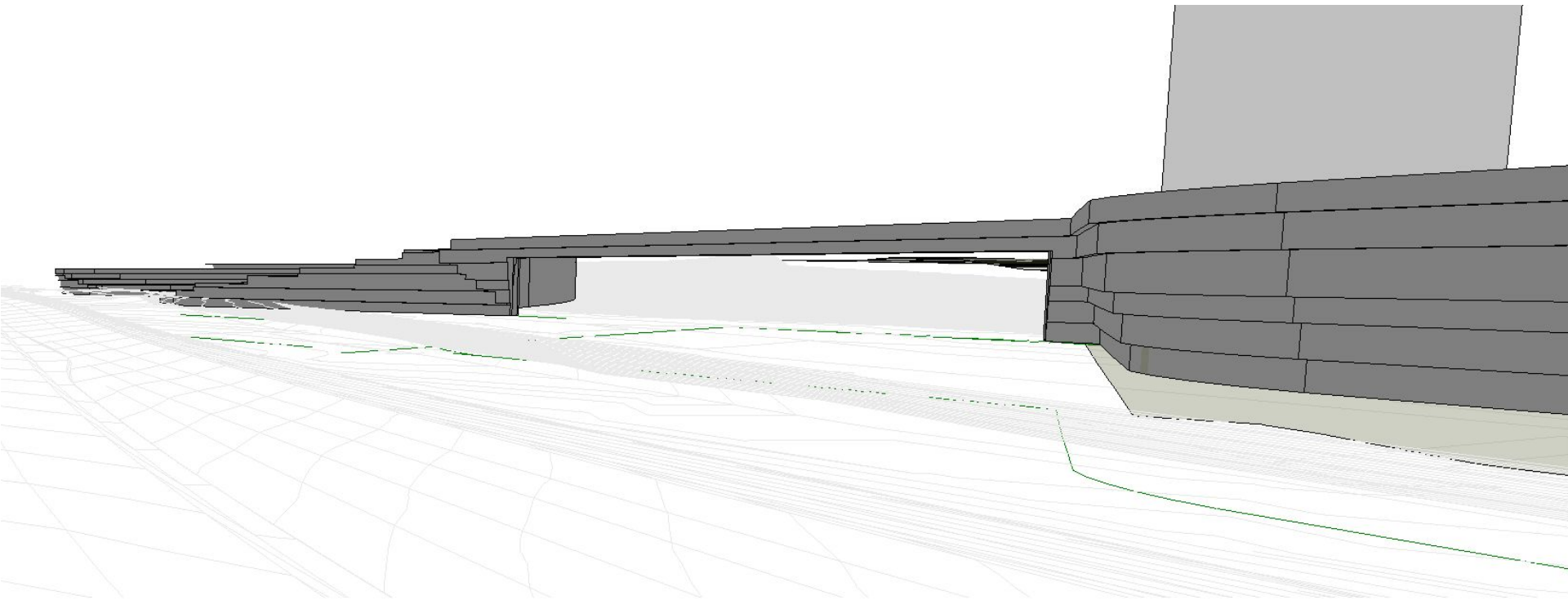


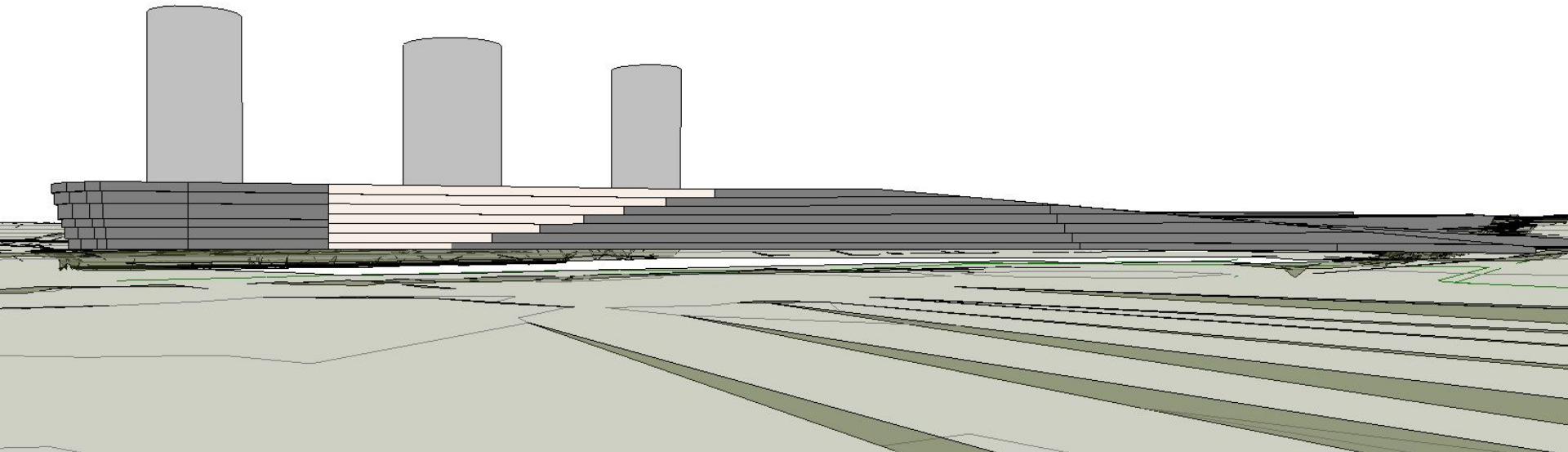




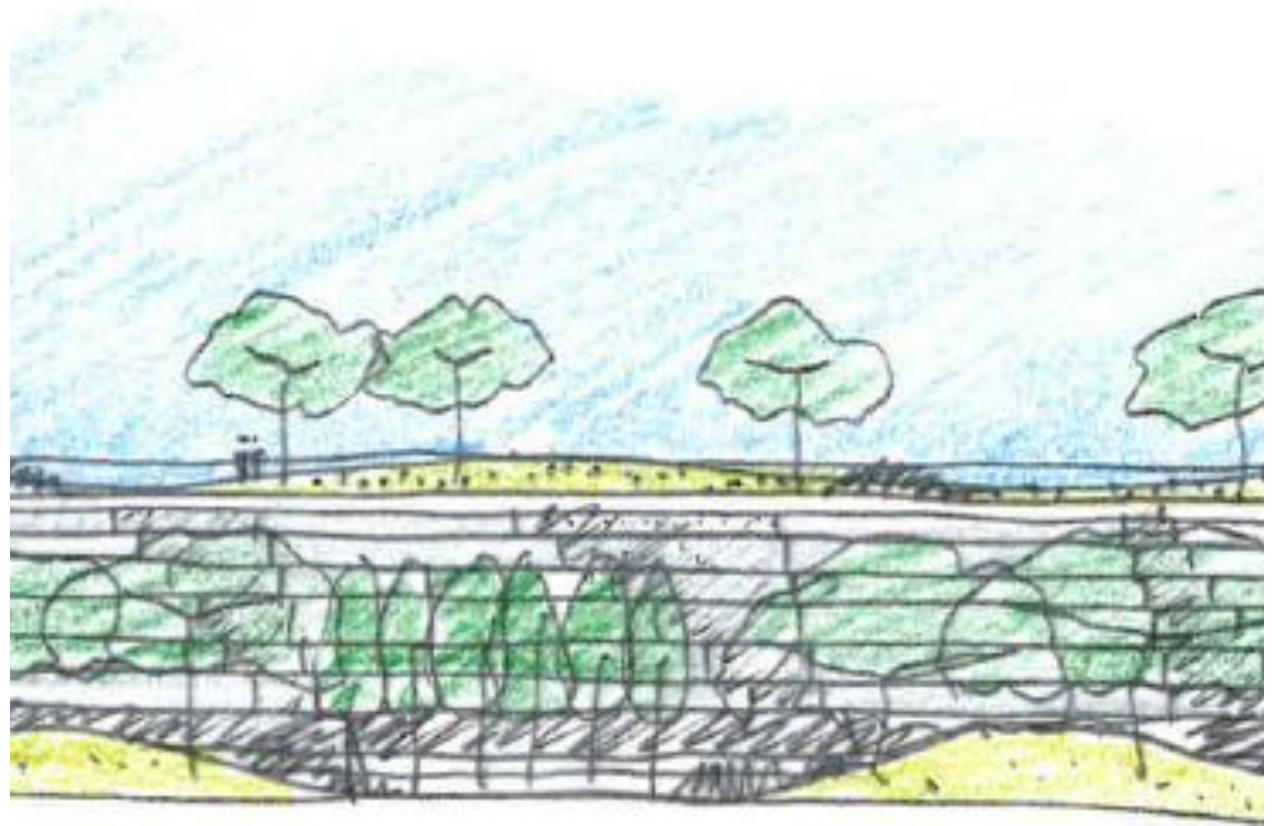


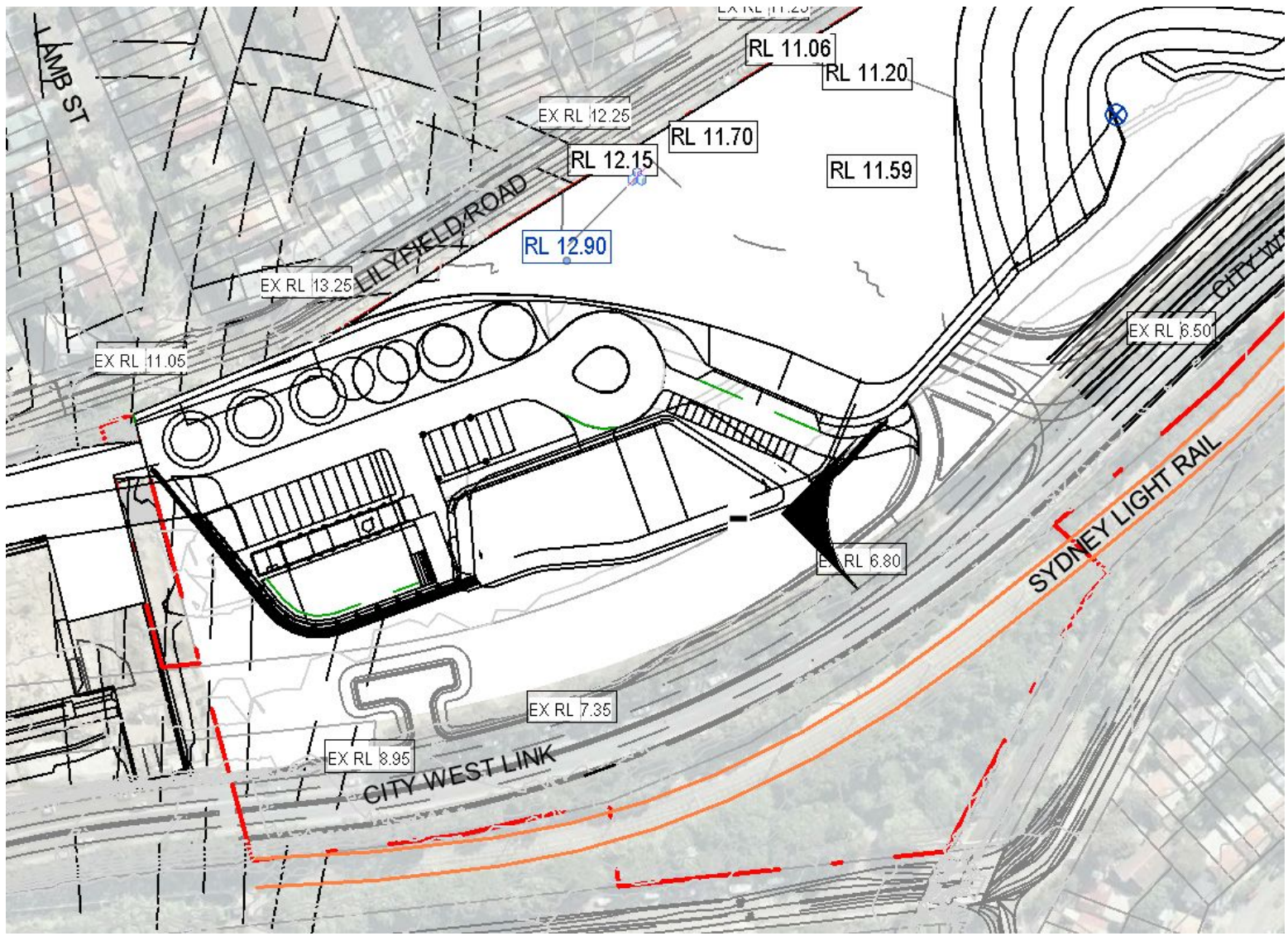


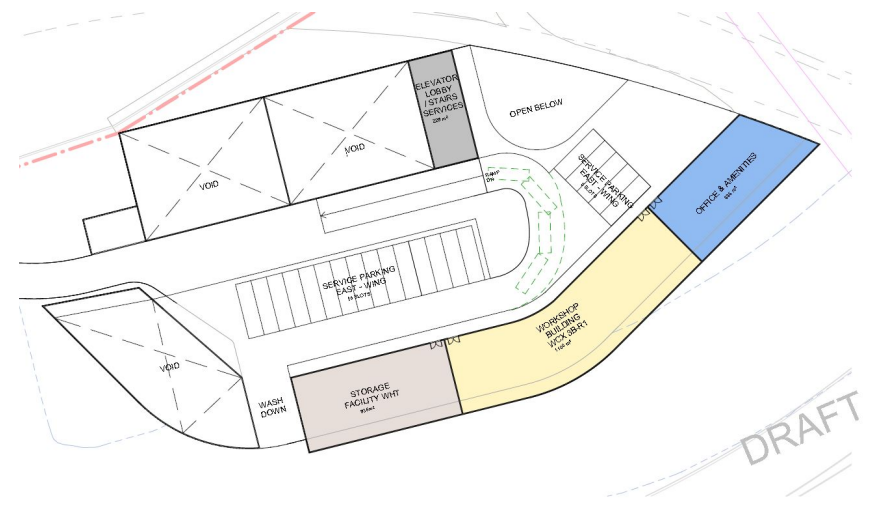
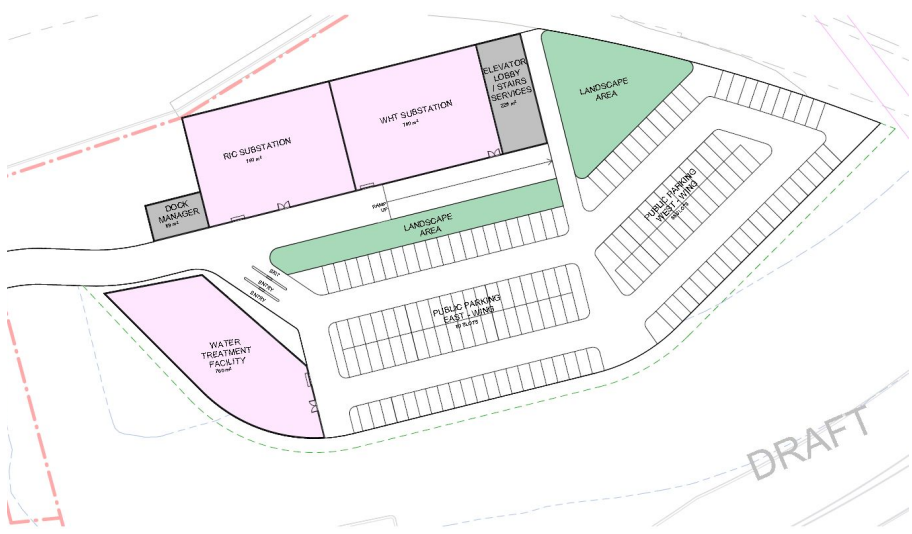


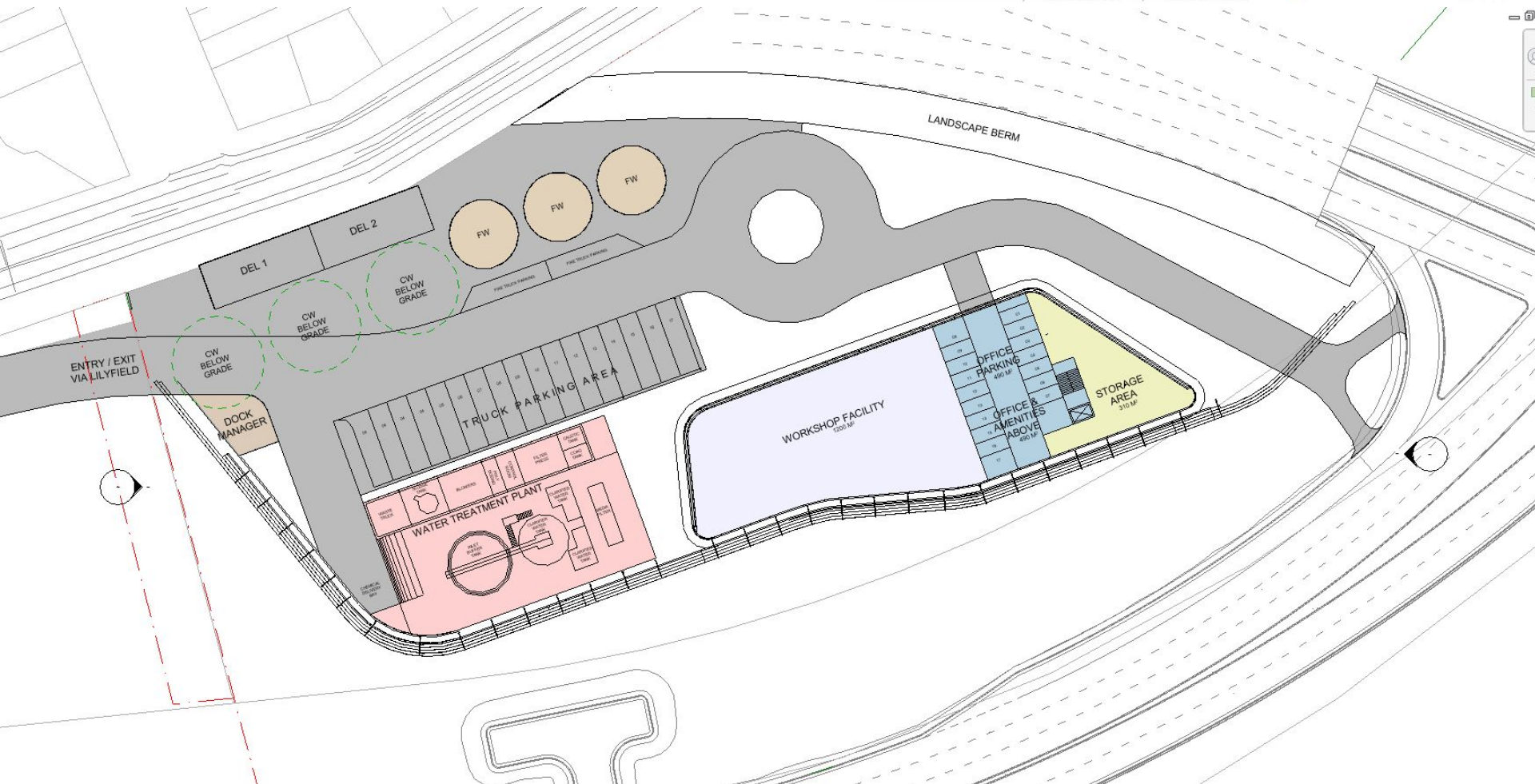


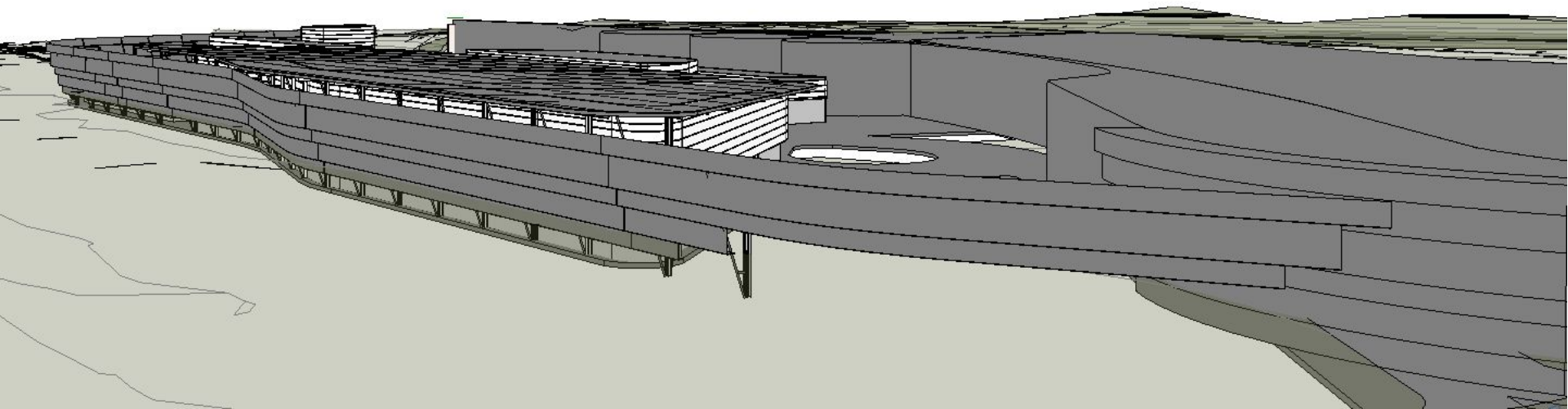


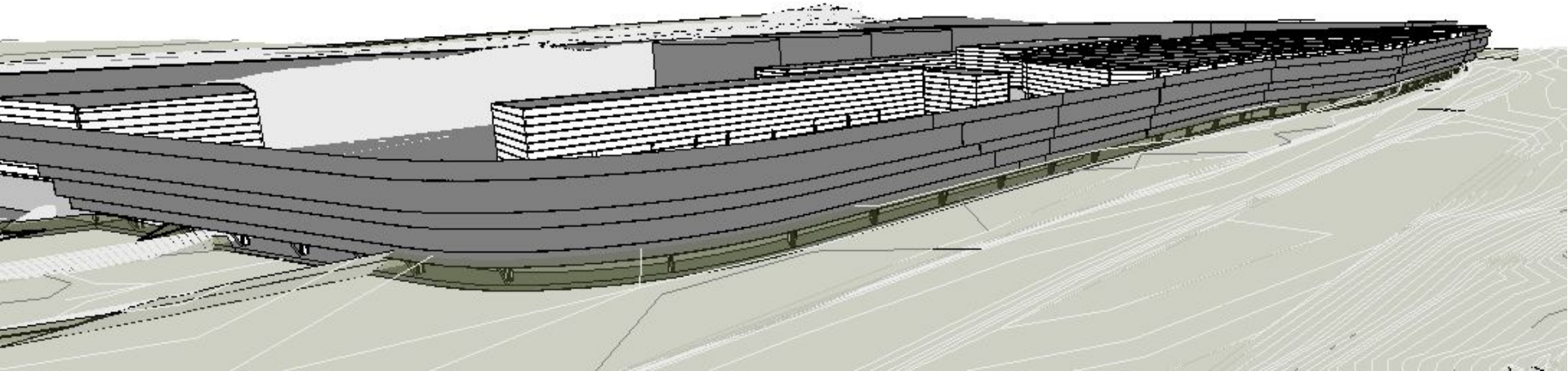


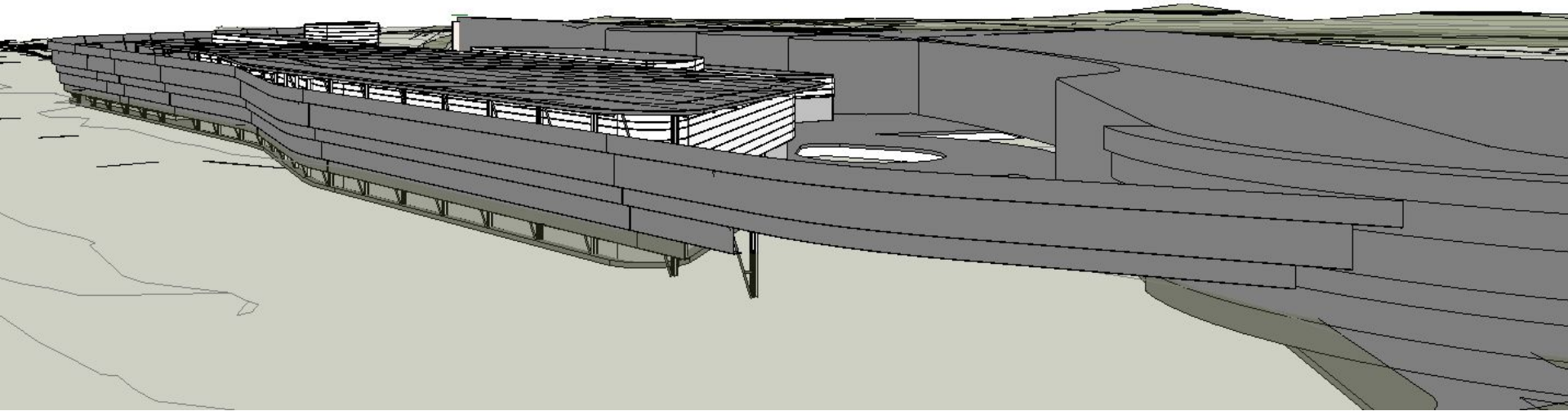


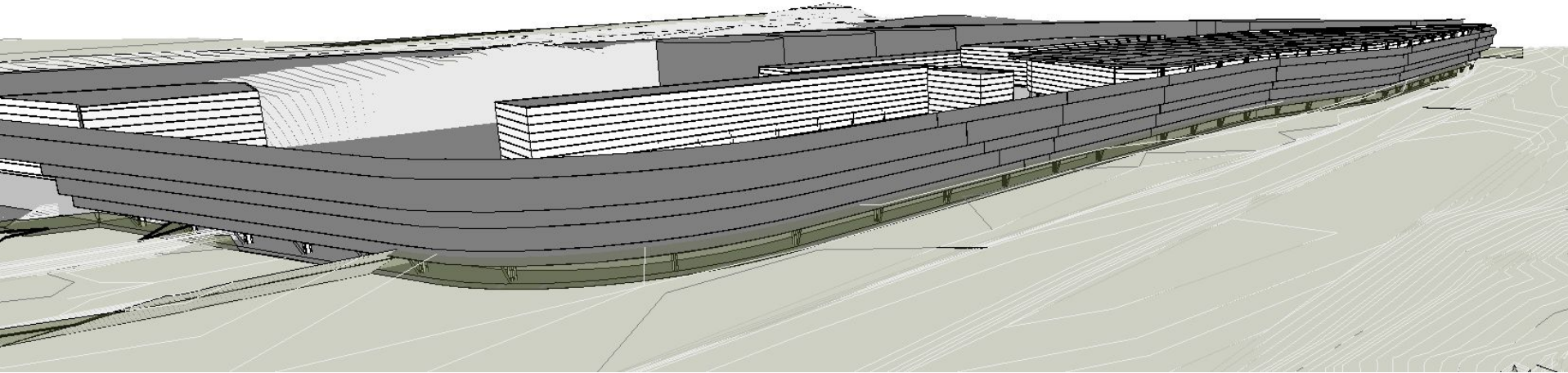


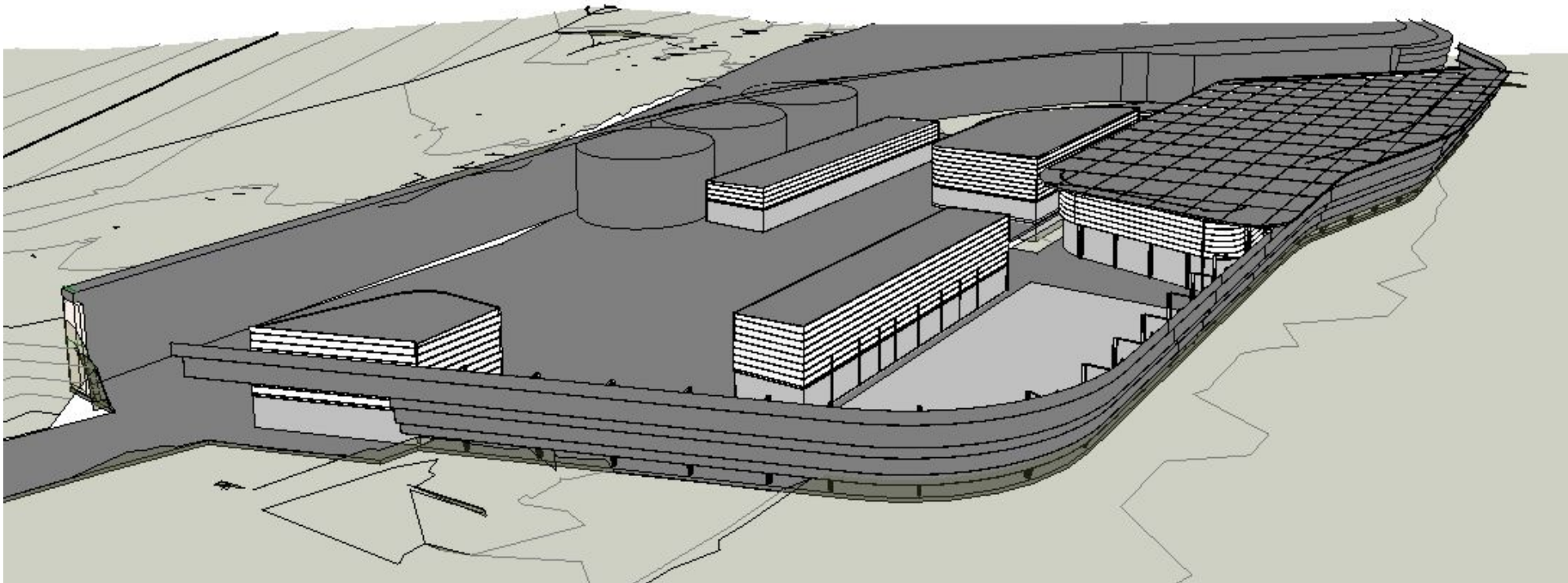


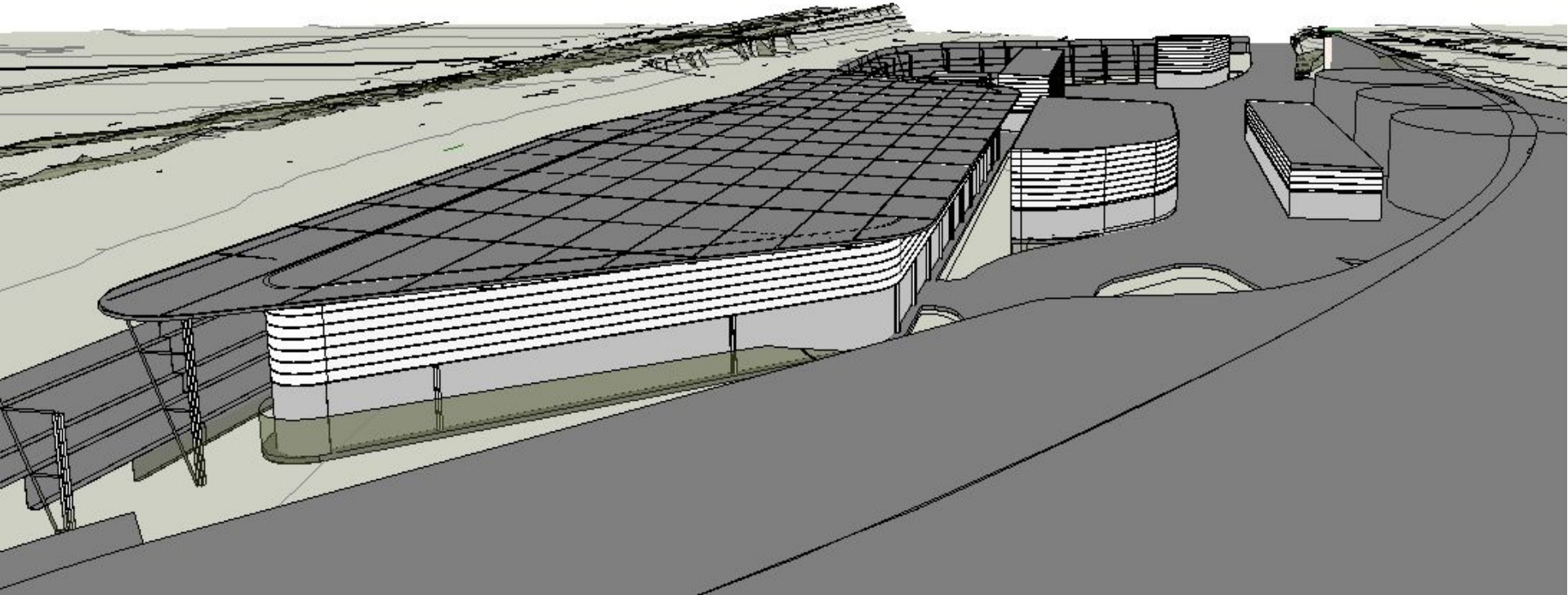


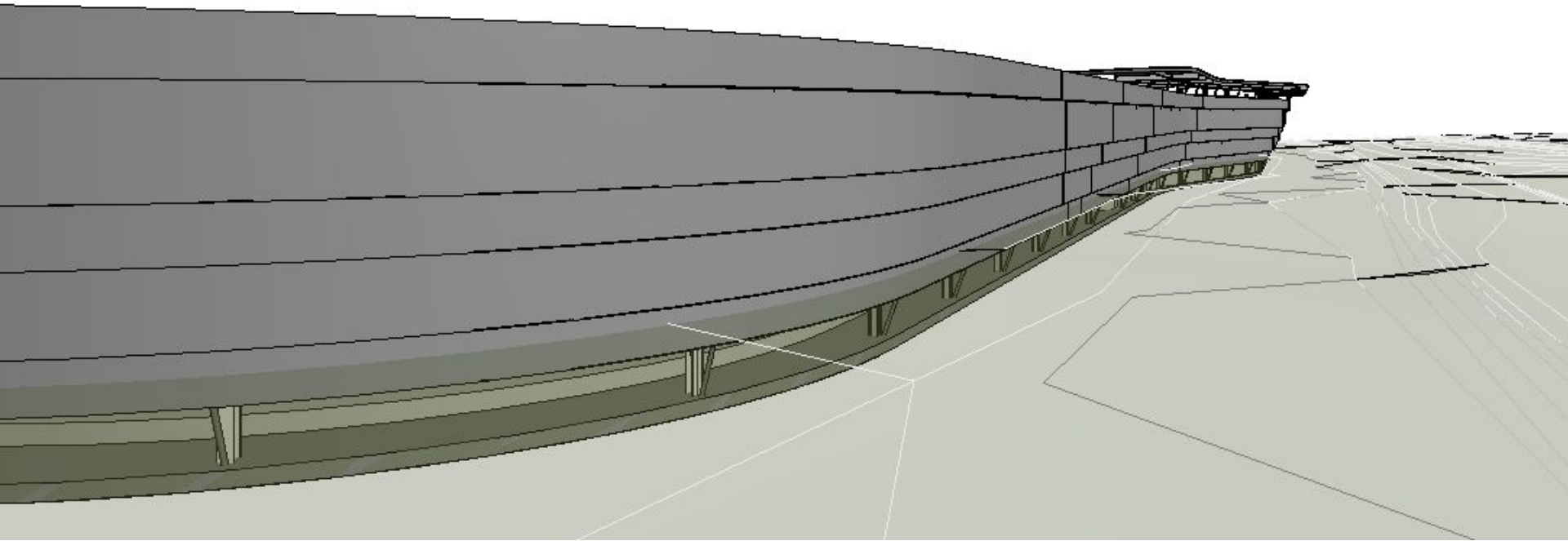


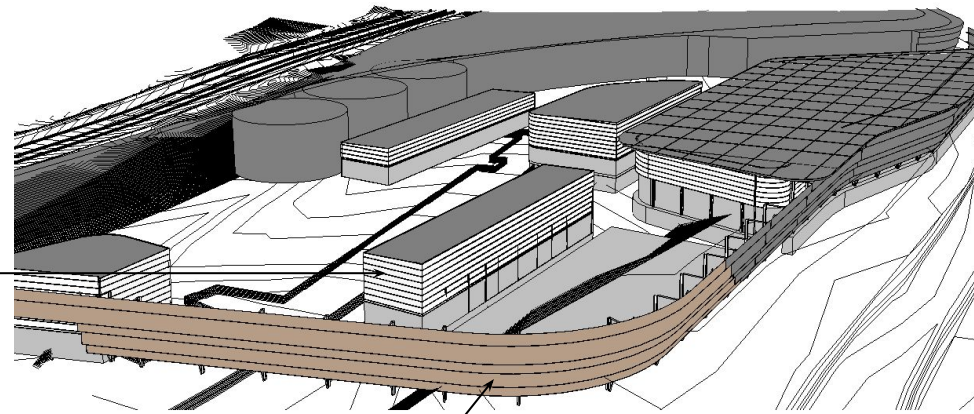




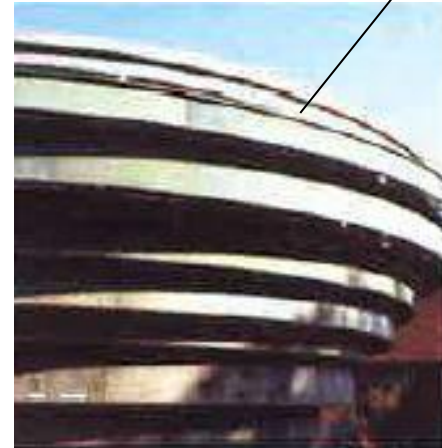








BACKLIT FACADES AND BASIC PORTAL FRAME CONSTRUCTION FOR SERVICE BUILDINGS



ESCARPMENT WALL

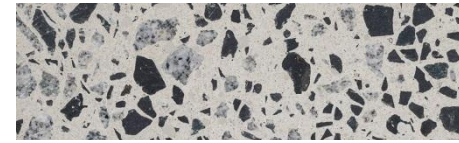
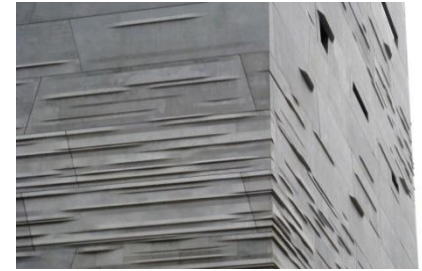
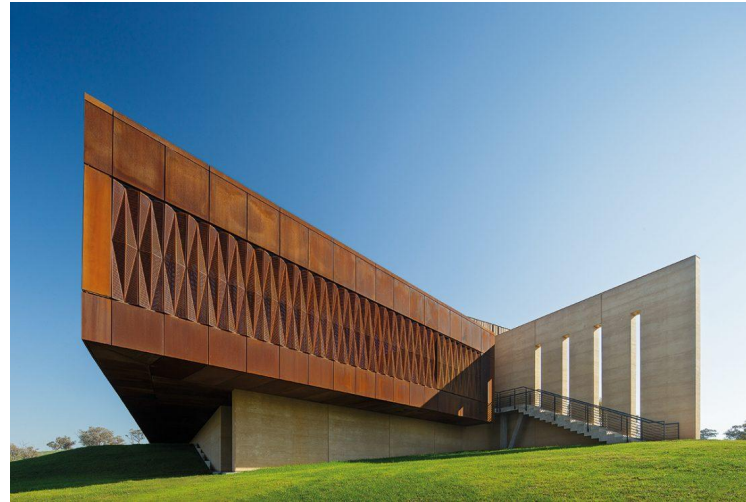
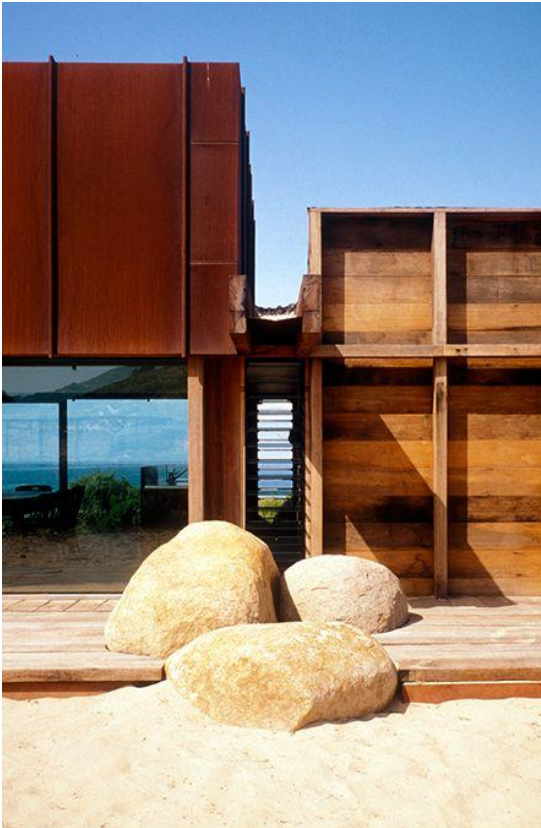
- fully permeable and was
- Cost effective to install.
- drainage on site avoided
- ecological impact minimised.
- Laying the permeable pavers is labour saving and safer to lay as the weight of each piece allows it to be installed by one person.
- permeable pavers are hardwearing and have a high resistance to heat load giving the surface an exceptionally long working life.
- 10 degrees difference for hot days – safer workplace
- Warranty provision 5 years. Effective life min 20 years.

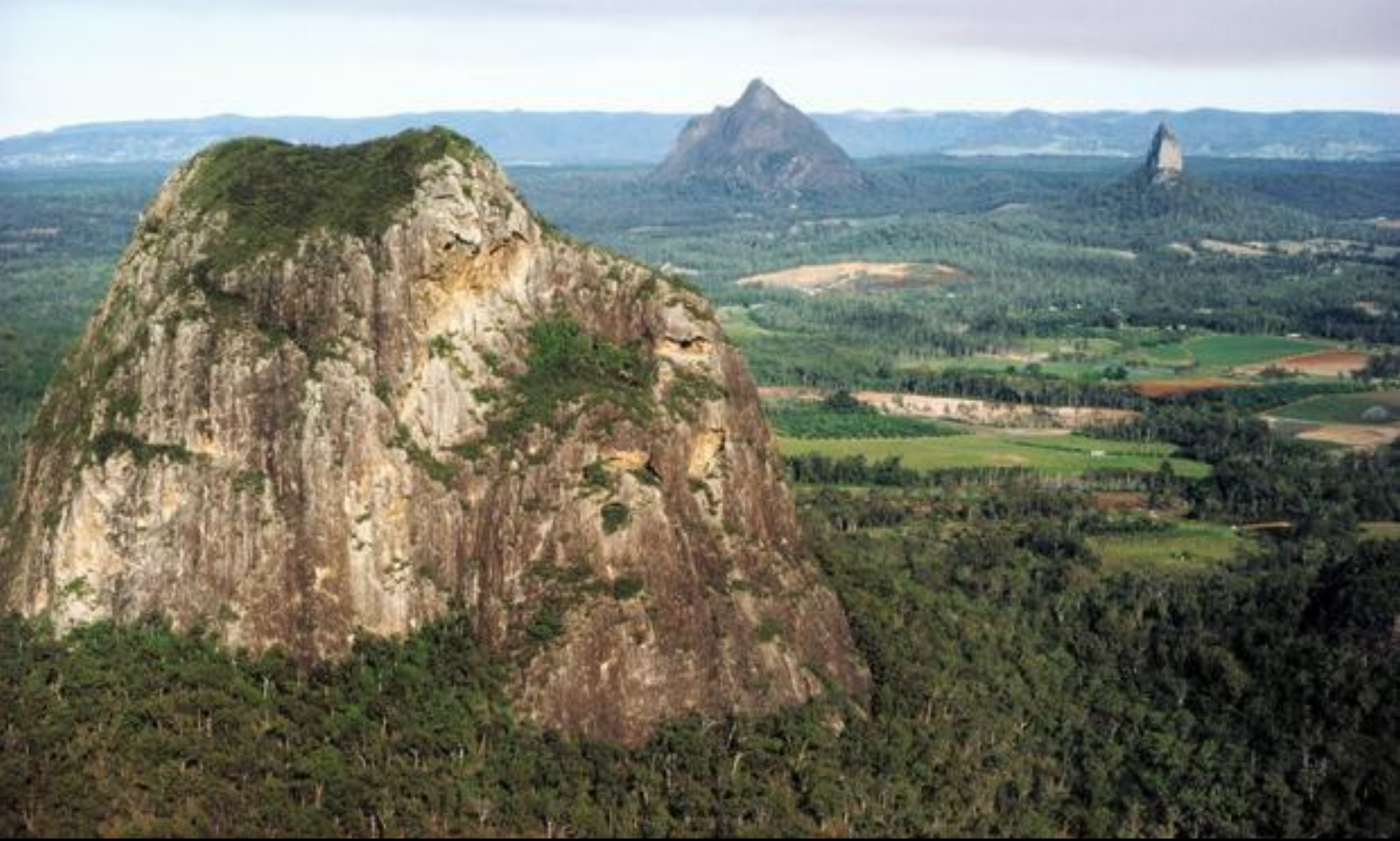
www.sure-green.com



TruckGrid Max supports
20 tonne axle loading
\$25/brick approx, 4.16 per sqm
300mm excavation, Gravel base







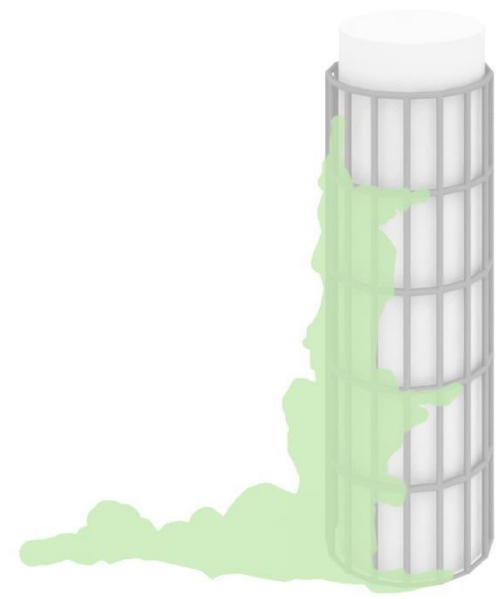
STACK VENTS



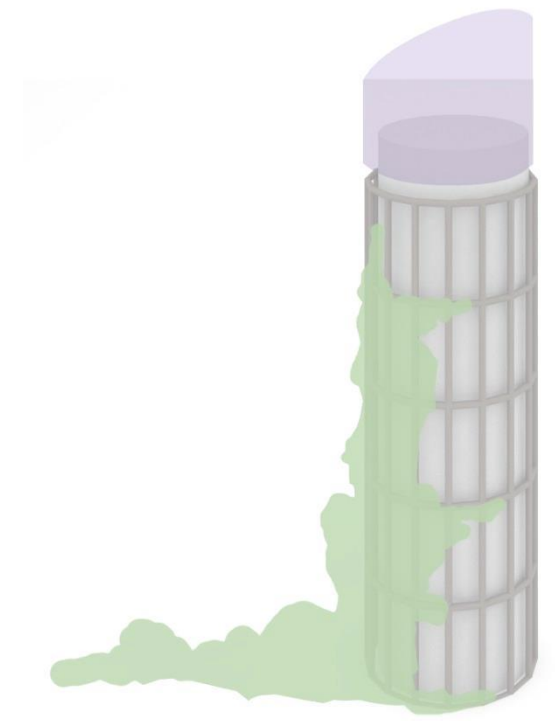
FLUE STACK



SECONDARY FRAME



VEGETATION



TRANSPARENCY









